

How to make a Personal Computer





SAFETY FIRST

For your safety, and to avoid damaging your Kano PC, make sure you read all the instructions before you begin.

- Never touch the heat sink because it can get hot!
- Do not use the Kano PC charging cable or power supply units with any other device. Charging other devices with the Kano PC charging supply unit can cause a fire or damage the device.
- Don't charge your Kano PC near anything that can burn, or when no one else is home!
- Do not remove or tamper with the printed circuit board
- Only use the battery and power supply unit that come with your Kano PC. Using a different battery or power supply unit can cause a fire or damage your Kano PC!
- If you think your Kano PC might be damaged, stop using it, and visit the Kano Help Center at help.kano.me

If you see a comment in red, follow the instructions extra carefully

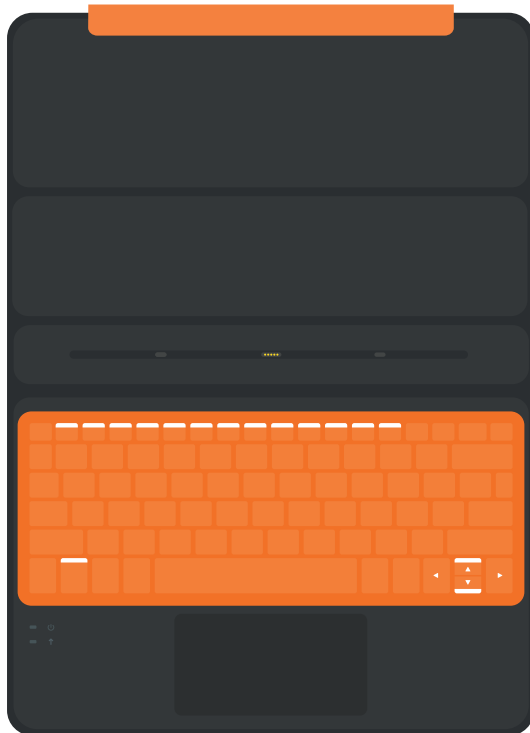


Take out the pieces!

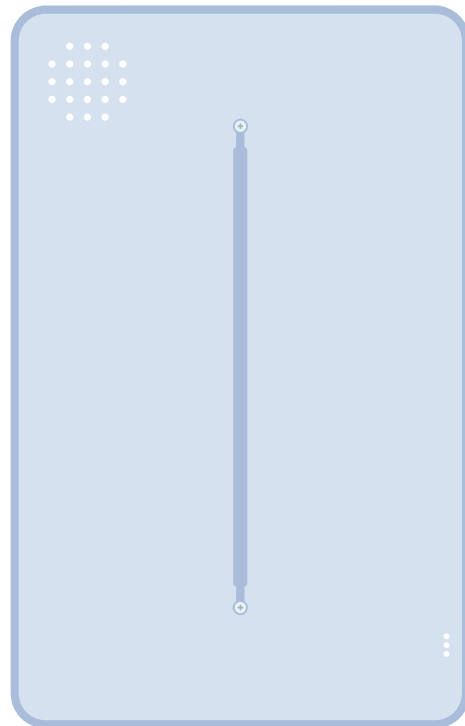


Screen + Printed Circuit Board

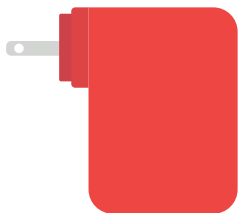
Keyboard + Sleeve



Case



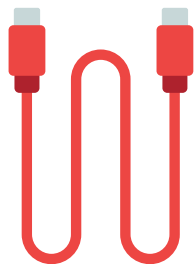
Power Supply Unit



Battery



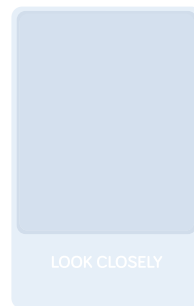
Power Cable



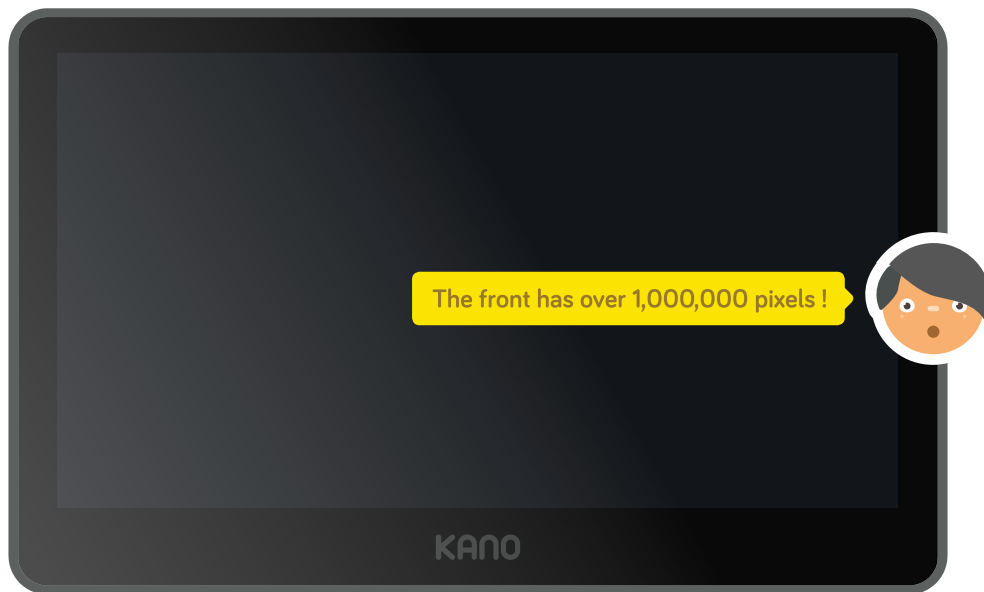
Speaker



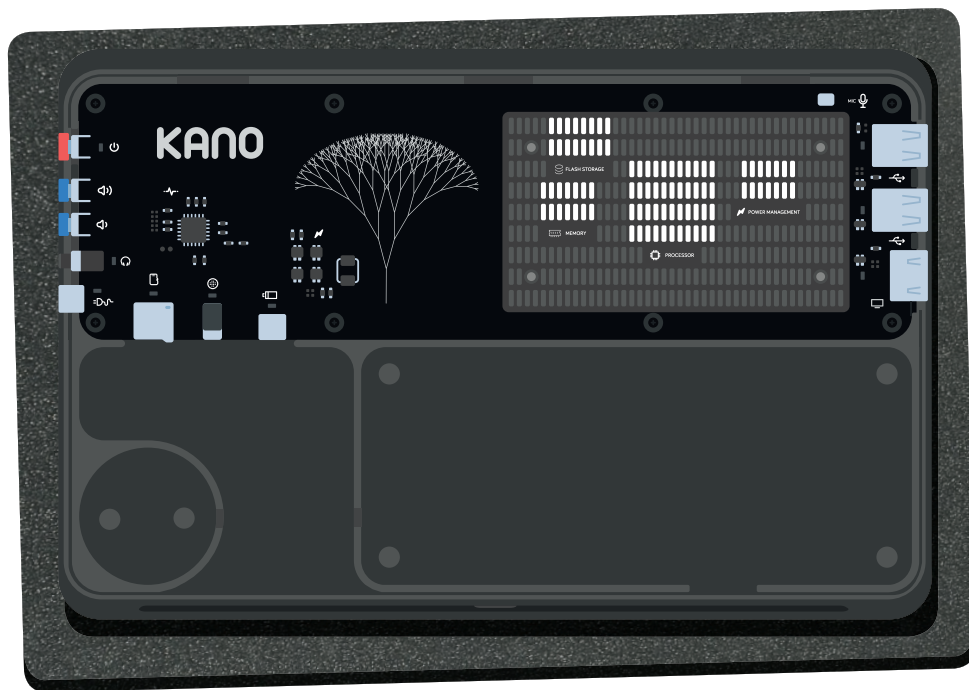
Magnifying Glass



Pick up the touch screen

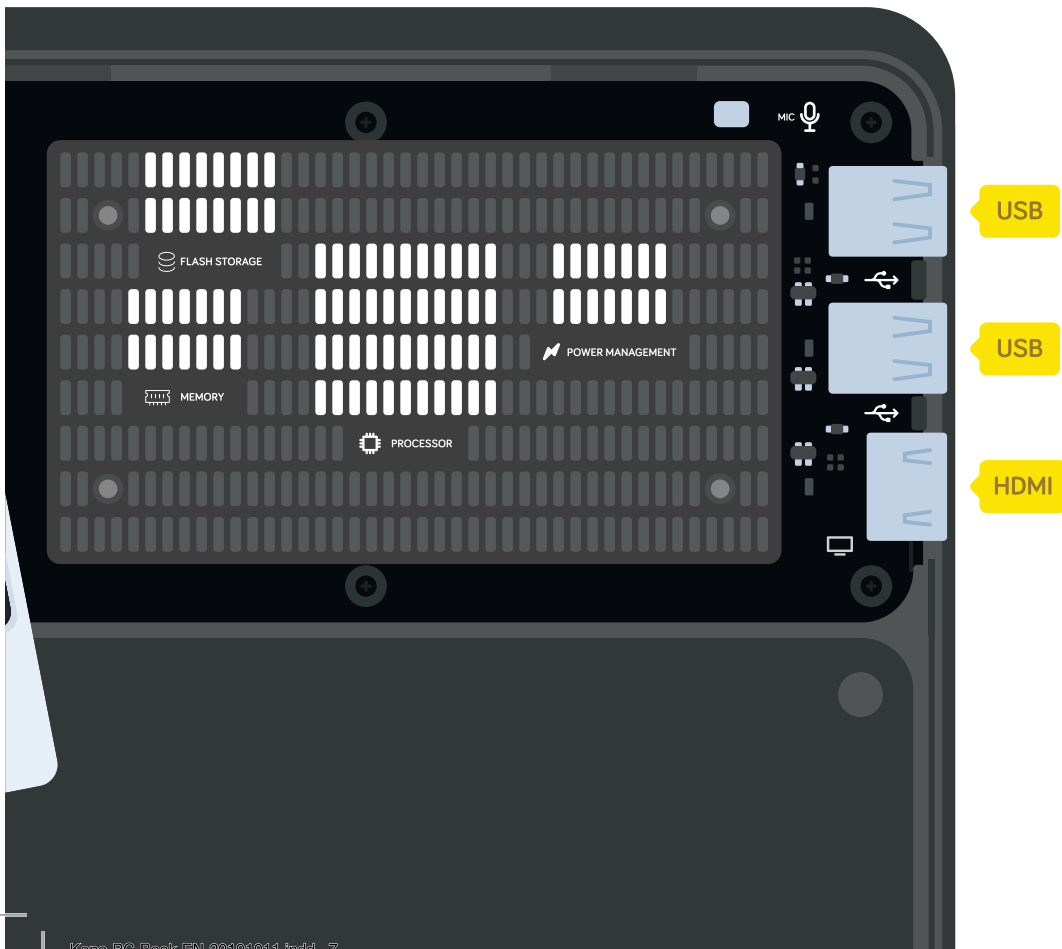


Lay it screen-down onto the black foam sheet



The back has a Printed Circuit Board, or PCB





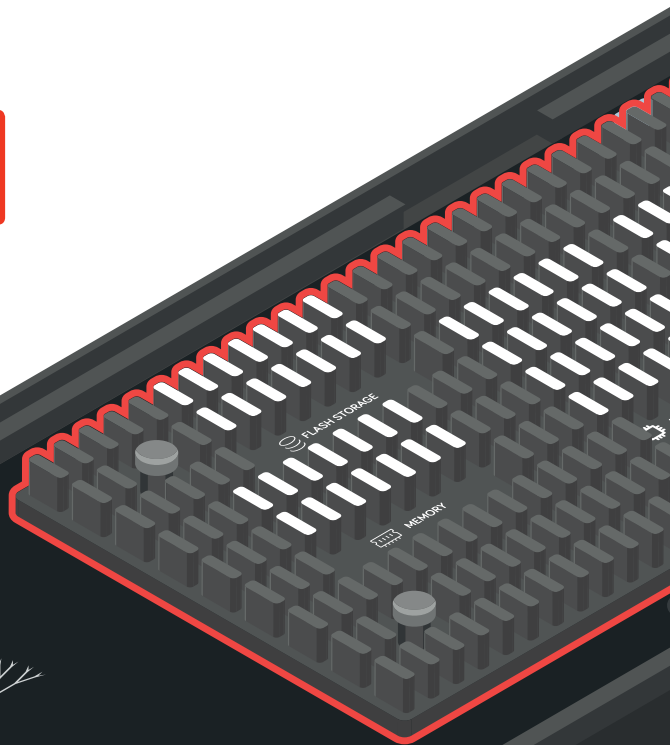
This part is called a heat sink



It's made of aluminum, which conducts heat away
from the very important chips



Be sure not to touch this as it can get hot!

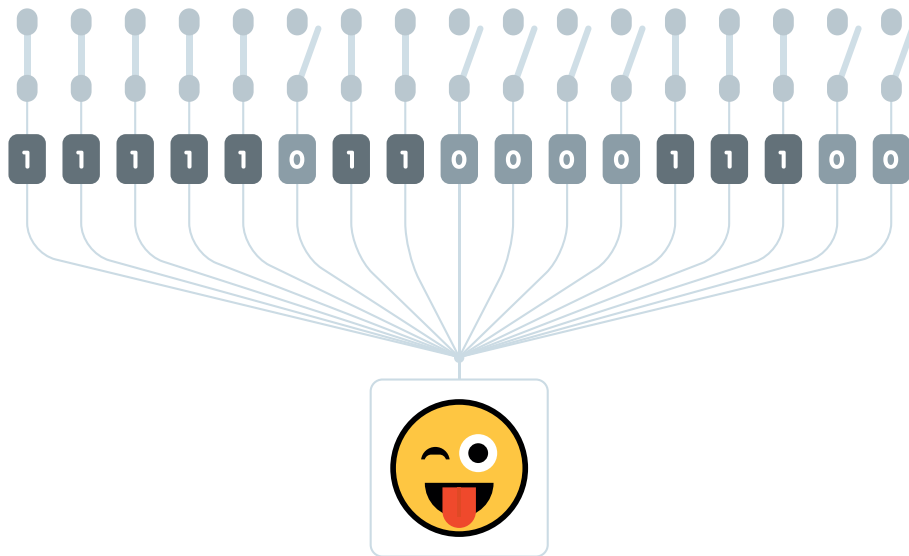


How does your computer think?



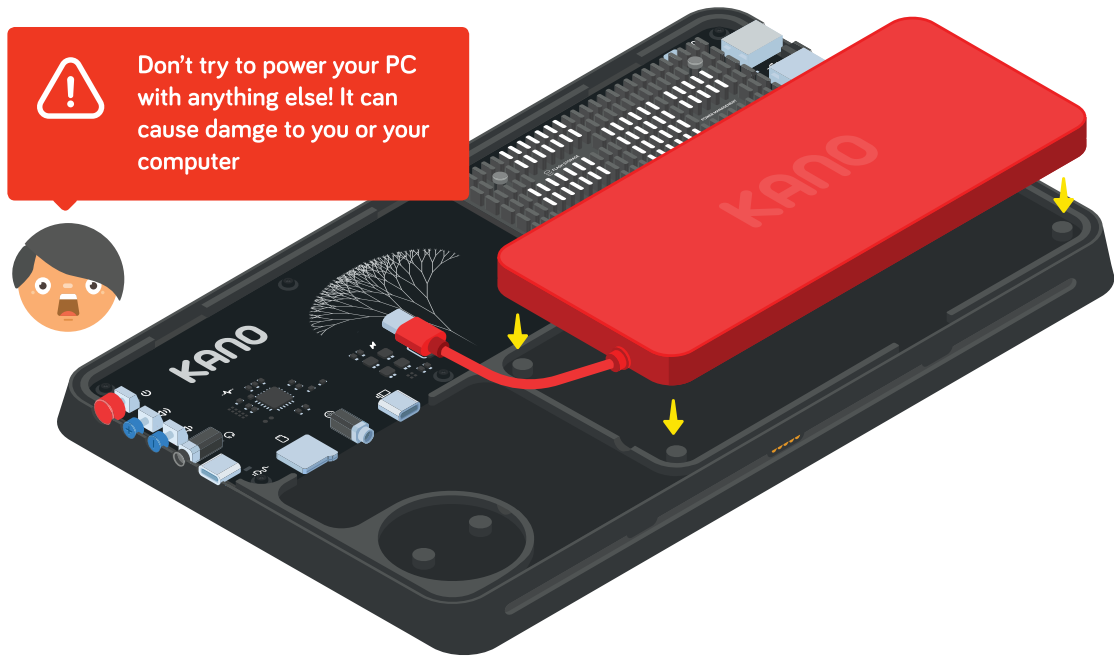
Underneath the heat sink is a CPU (Central Processing Unit)
with billions of electric switches inside of it

If a switch is on, that means 1. If it's off, that means 0



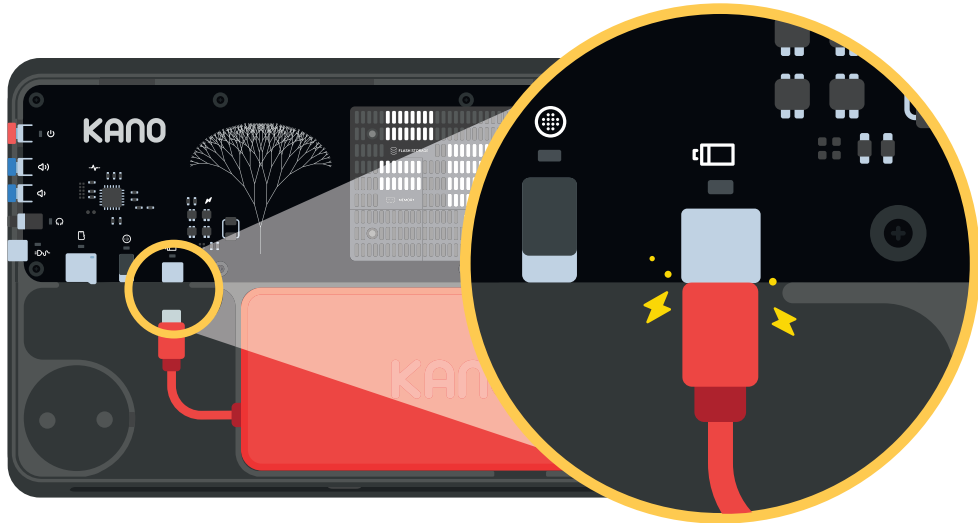
Your computer turns specific sequences of 0s and 1s - called binary code - into words, pictures, and logical rules

Let's give your computer some power



Take the battery, and push it onto the screen

Plug in the red cable



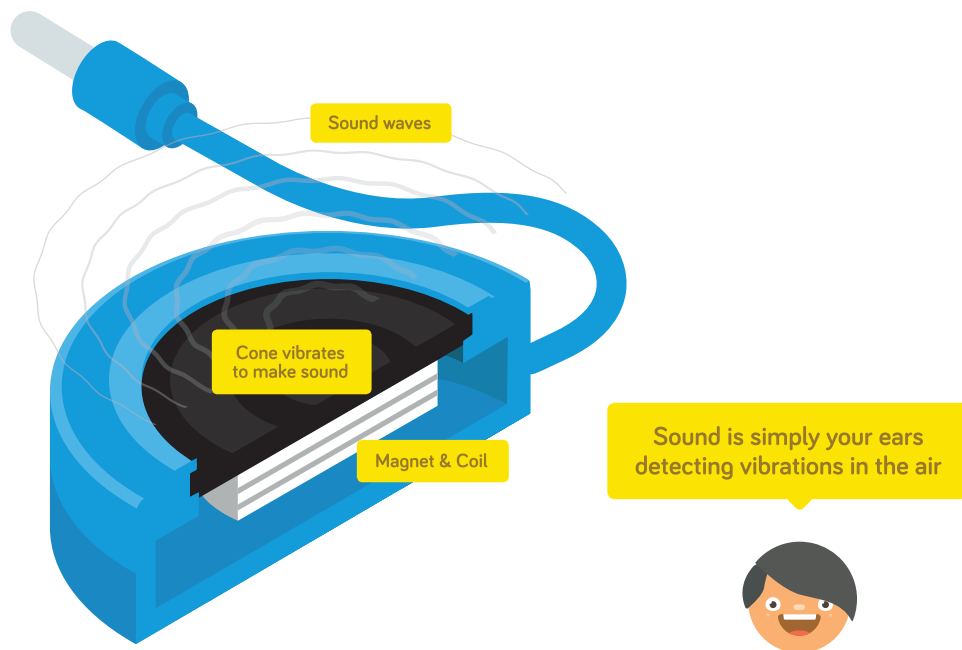
Electricity is now flowing from the battery into your computer!

Time to give your computer a voice



Grab the speaker, and push it onto the screen

On the outside we can see a black membrane



but inside is a magnet, and space for air

Plug in the audio cable

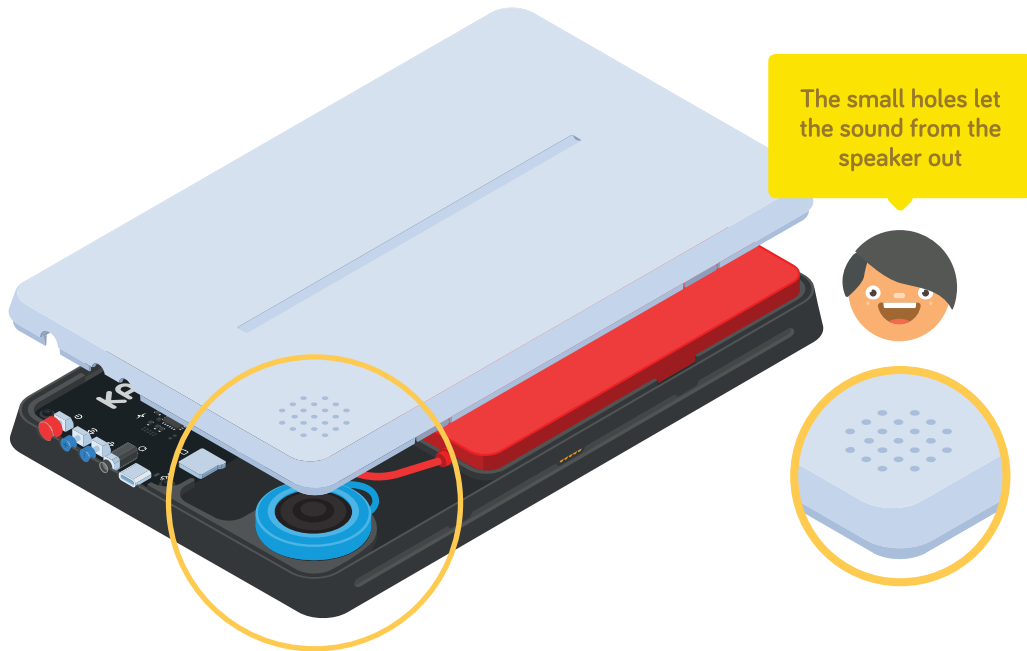


Make sure it clicks in



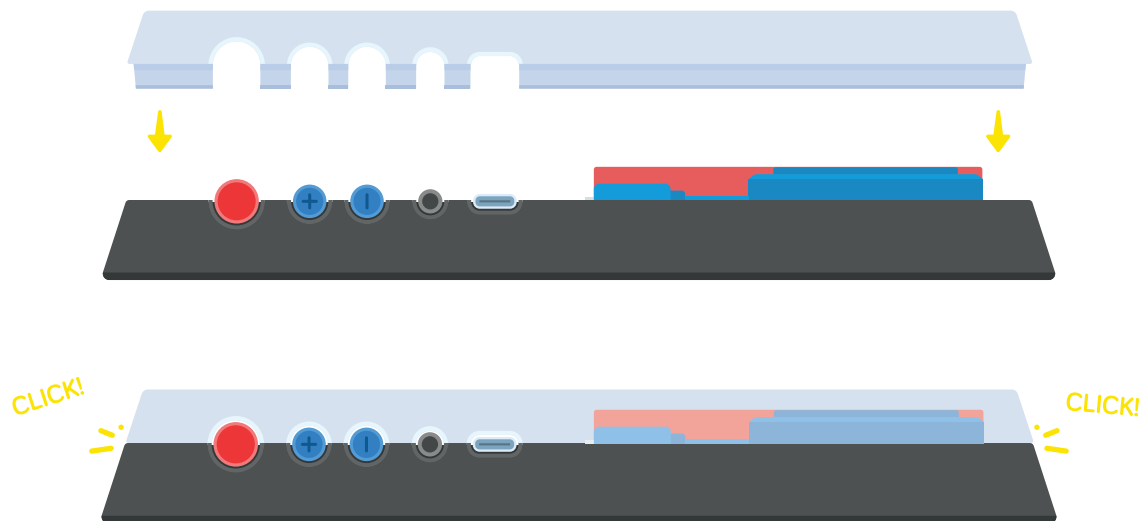
The cable sends signals to your speaker in 1's and 0's, they vibrate the magnet, membrane, and the air inside

Pick up the clear case



Hold it above the screen

Line up the grooves and push the edges into place



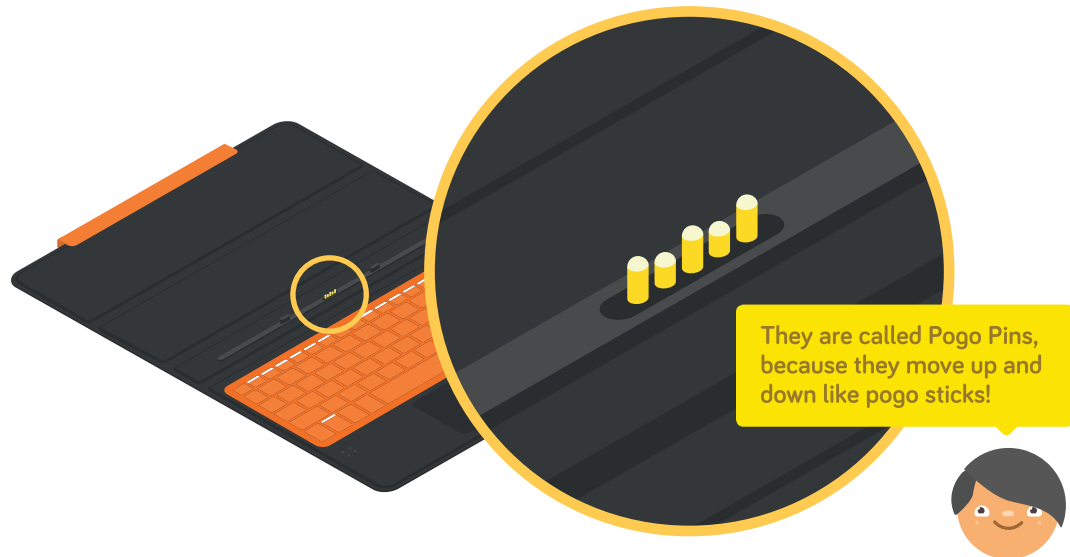
Make sure the case is snug and secure

You need a way to control your computer



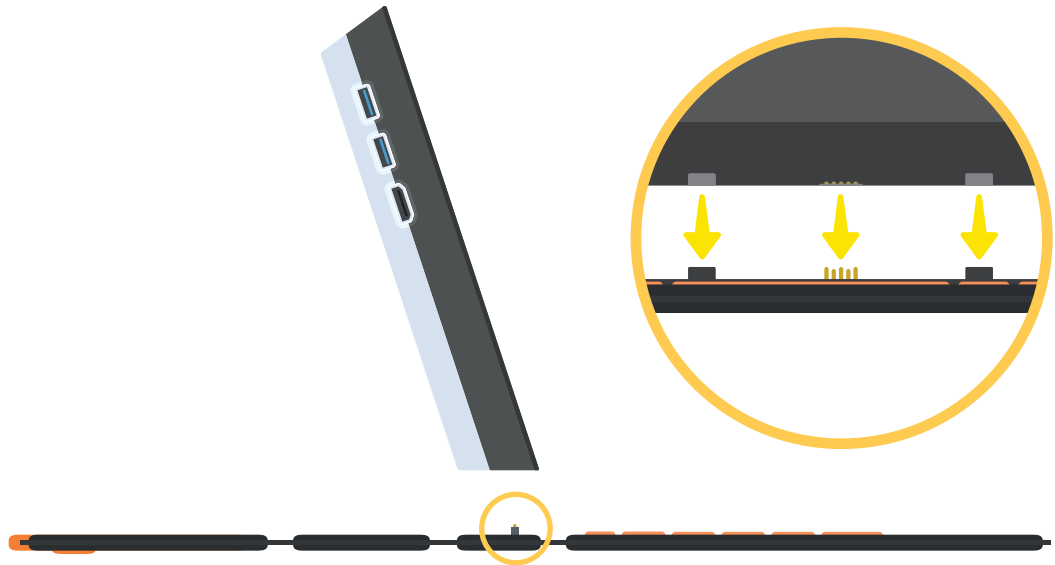
Flatten out the keyboard

See the pins? They draw electricity from your computer



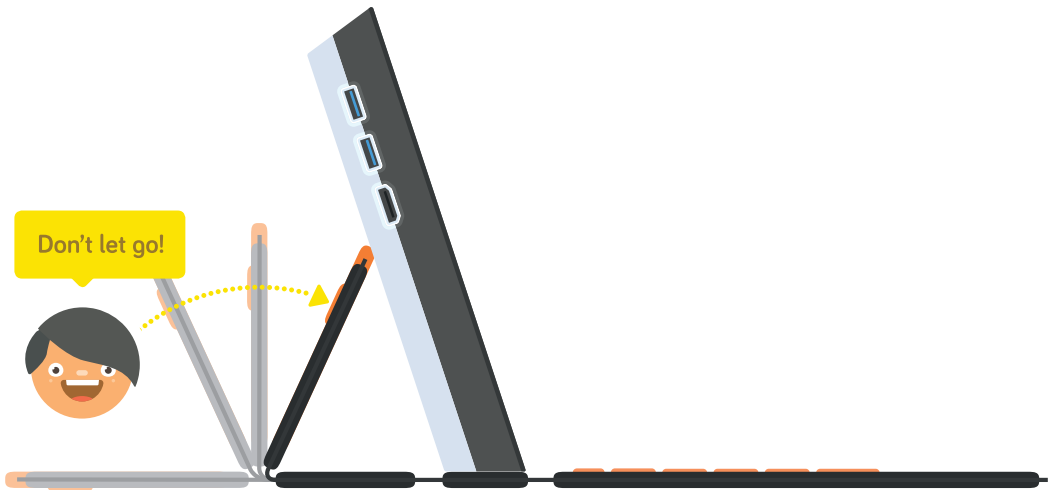
and send your commands from the keyboard to your computer

Place your computer onto the Pogo Pins



Can you feel the magnetic pull?

Hold the screen in place...



then lift the back of the keyboard

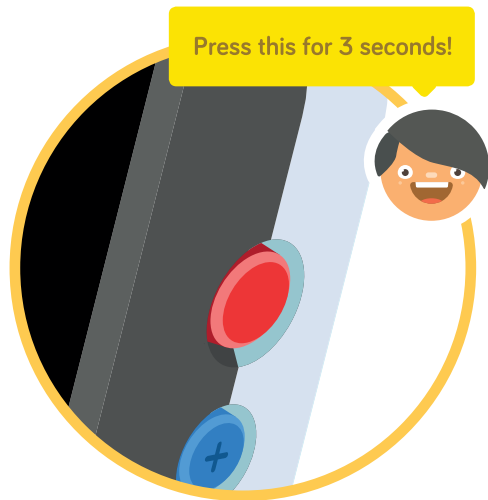
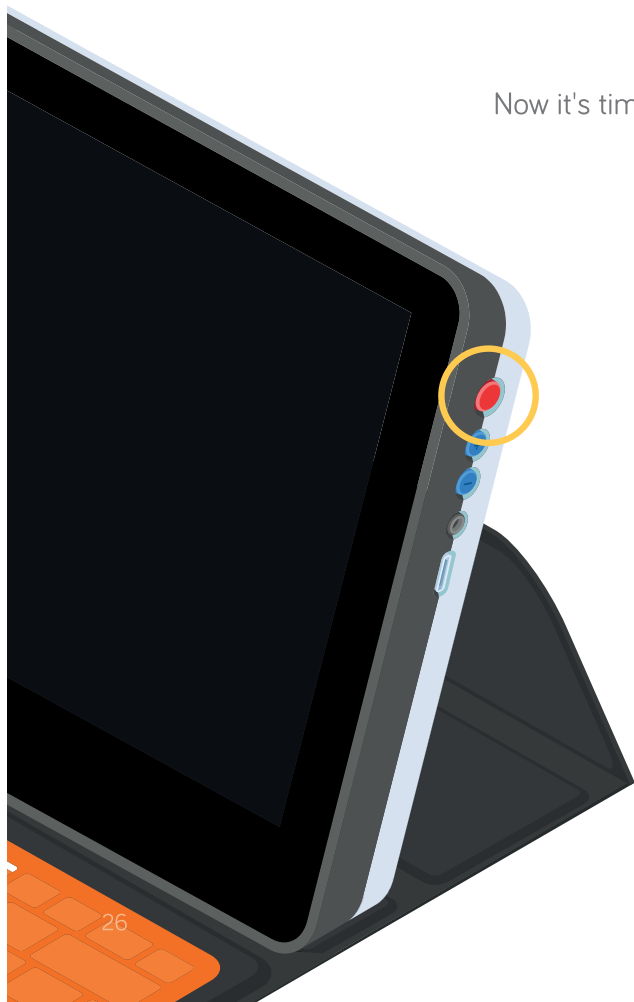
Slot the orange piece into the groove in the clear case



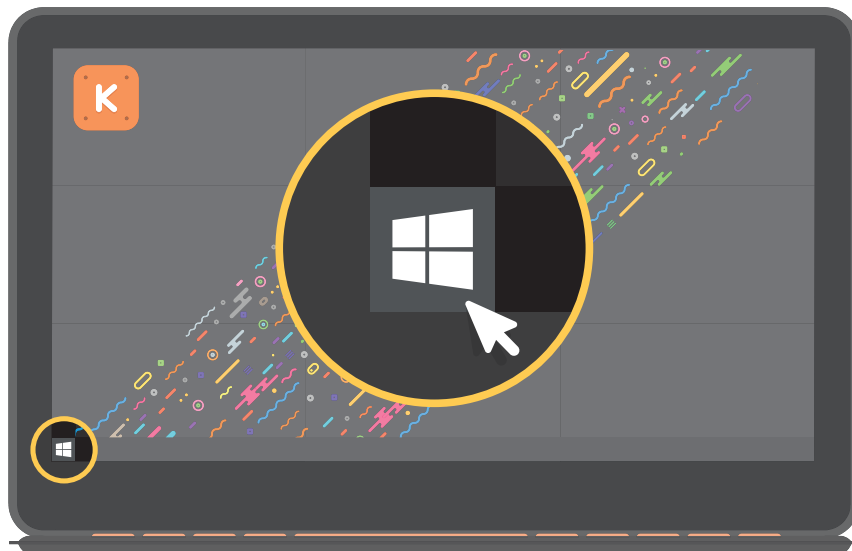
Congratulations! You've built your computer



Now it's time to turn it on



Open the start menu

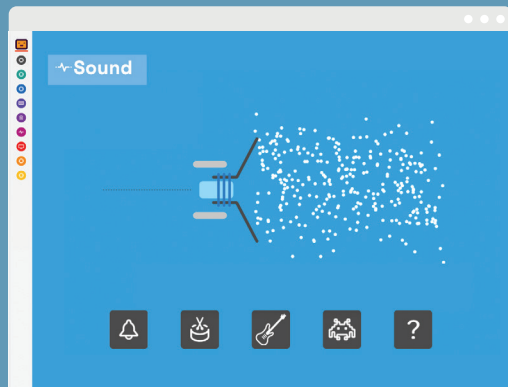
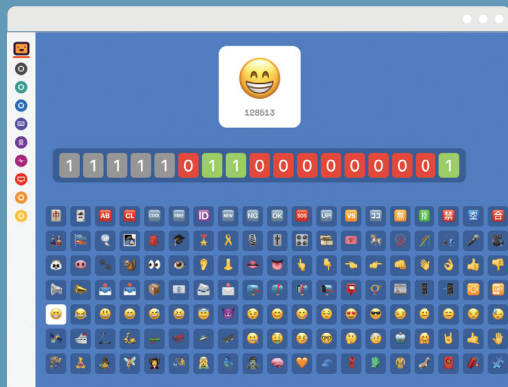


and click on Kano PC Introduction



How Computers Work

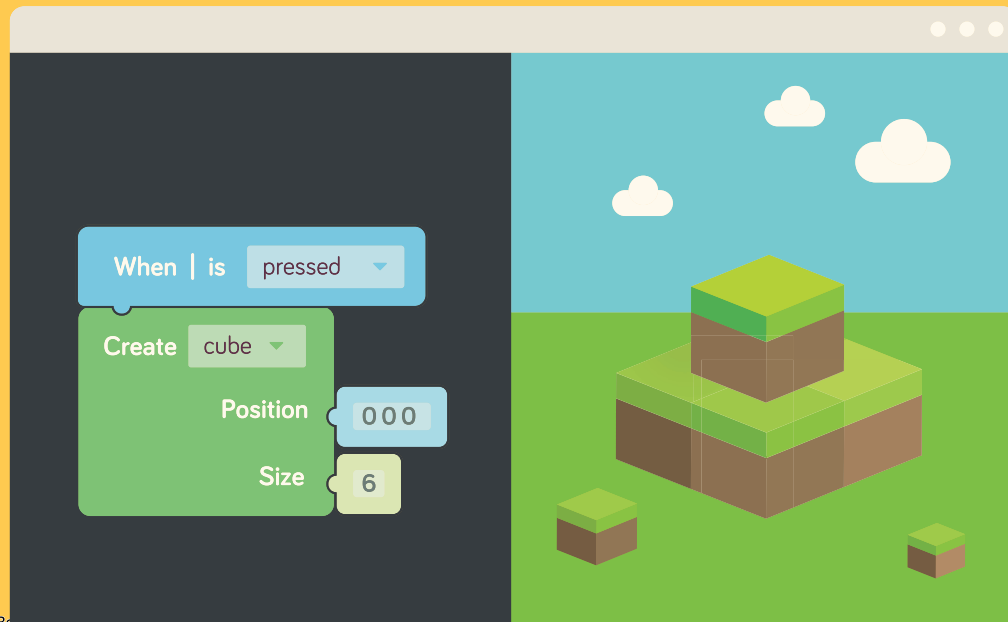
Look inside your computer, see how it works. Make emojis with binary code, tinker with touch and sound, play with the processor, and more





Kano

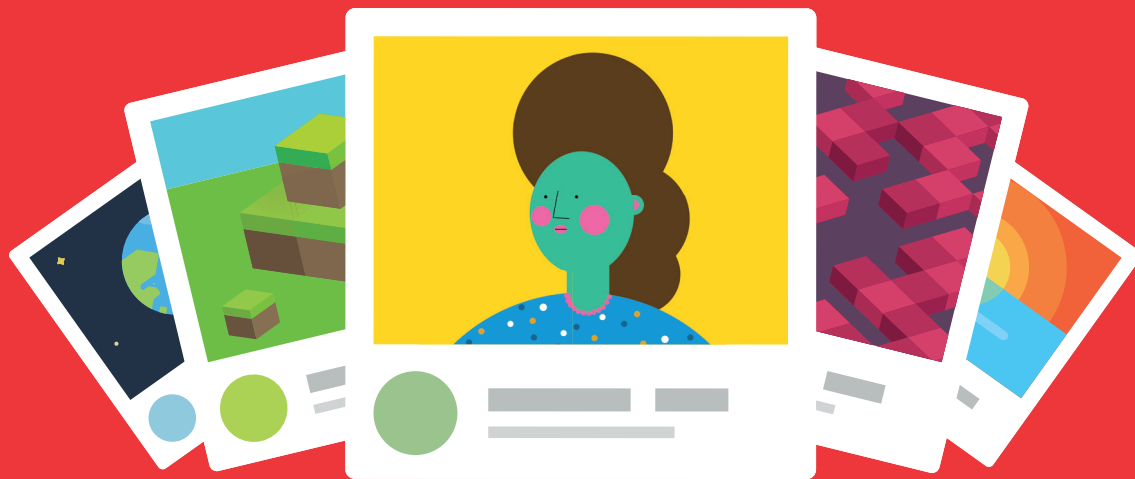
Make, learn, and play with technology. Level up and unlock coding powers.
Share your creations with the world





Make Art

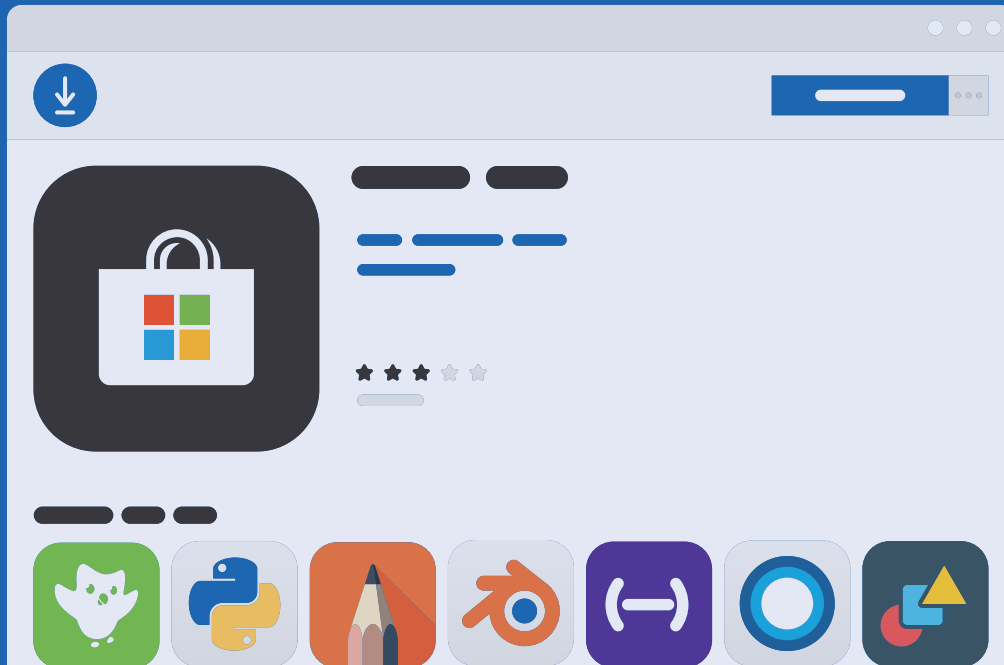
Learn to draw beautiful images with code





Microsoft Store

Download more fun and creative Windows apps for your computer from the store





Cool Things To Do



Hair



Color

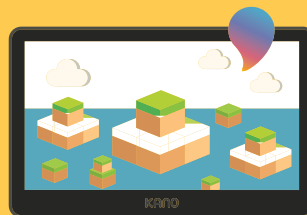


Create a custom Kano avatar



Hey Cortana

Ask Cortana
a question



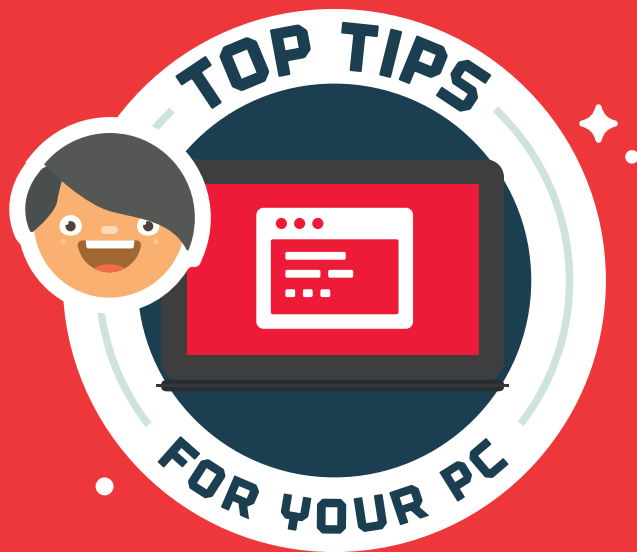
Make a 3D shape
in Paint3D

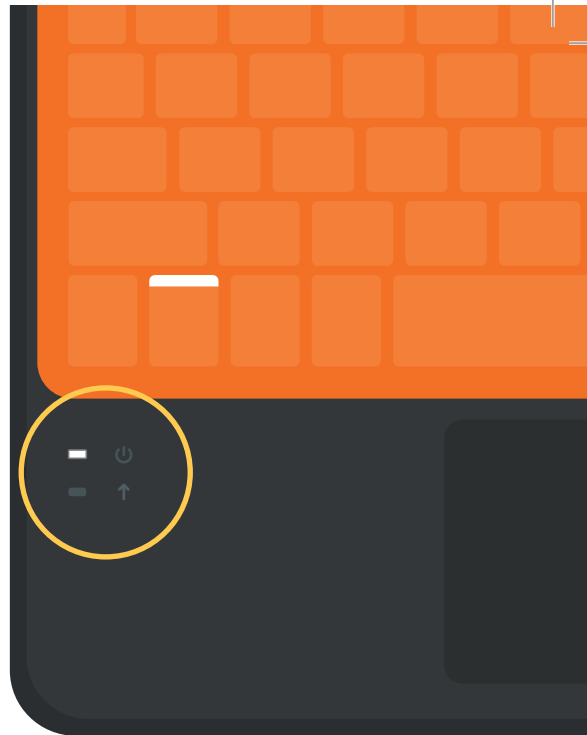
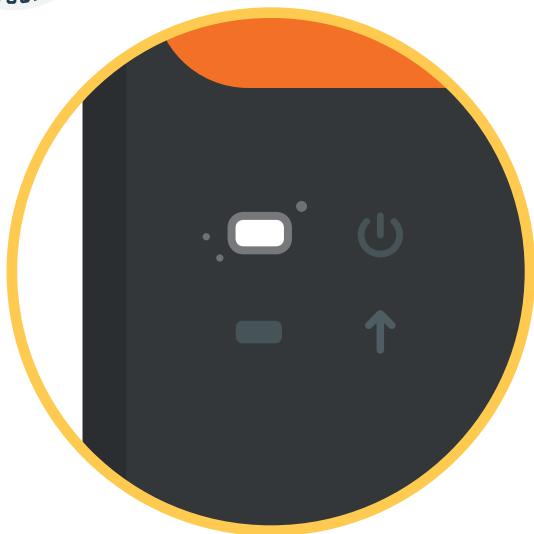




Put stickers on the case



Change wallpaper





The white LED lights will tell you when your keyboard
is connected () and the caps lock is on ()



Battery power low? Charge your computer
with the red PSU and the red charging cable.
PSU stands for Power Supply Unit



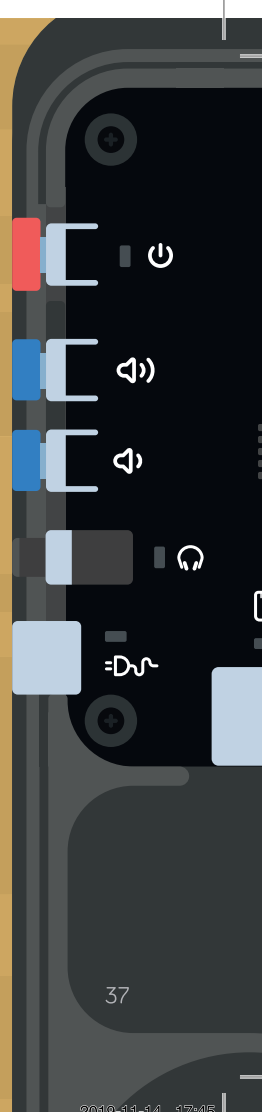
Don't power your PC with anything else!
Do not use the cable to power any other
devices. Remember this to avoid
damage to yourself or your device



Then plug the PSU into the wall and
the other end into your computer



Your USB-C cable is for
power only

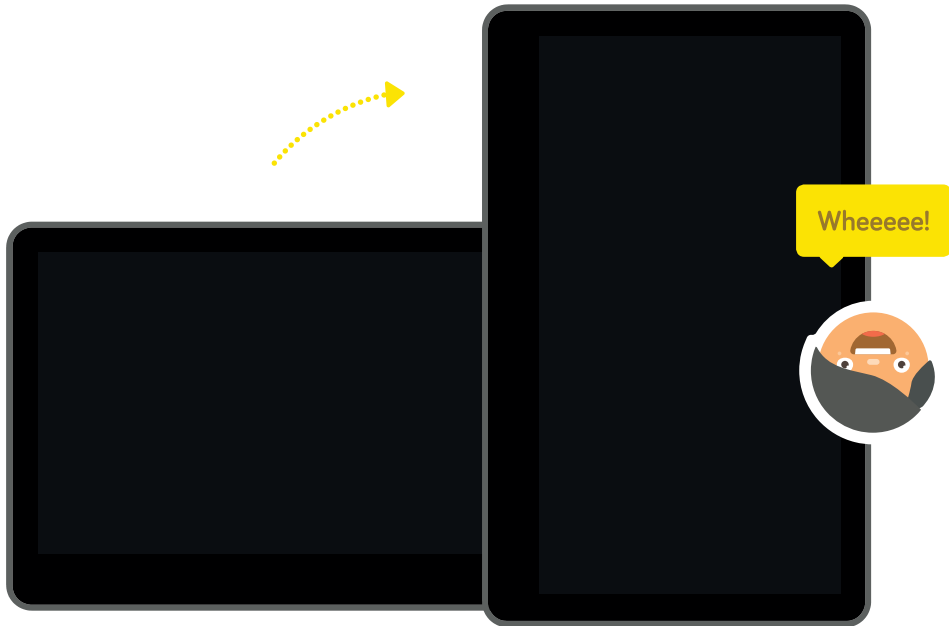




You can remove the touchscreen to use it like a tablet

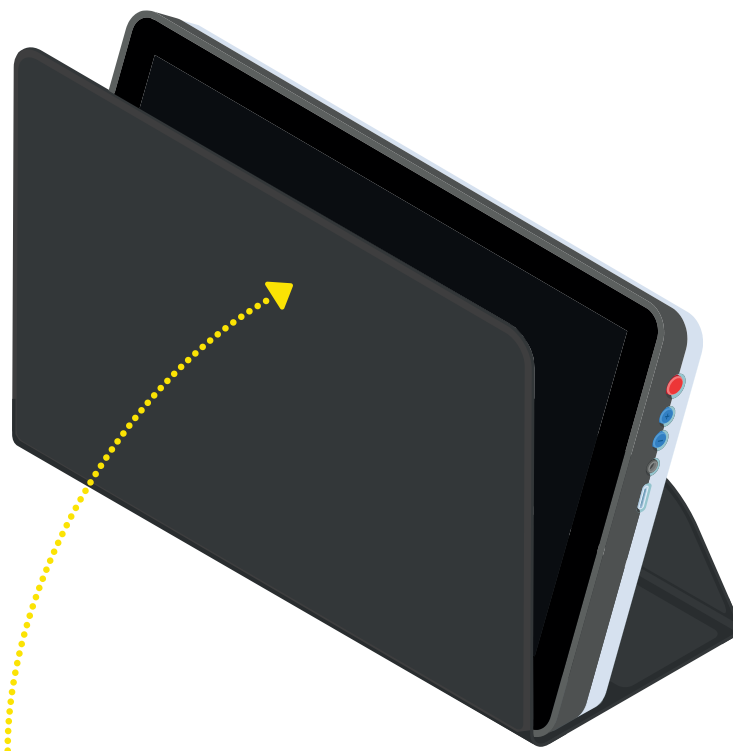


Oh, and it flips





To carry your computer, lift up the keyboard



Unfold the back stand, and cover your computer





Your keyboard has hidden powers



COPY



PASTE



QUIT



CUT



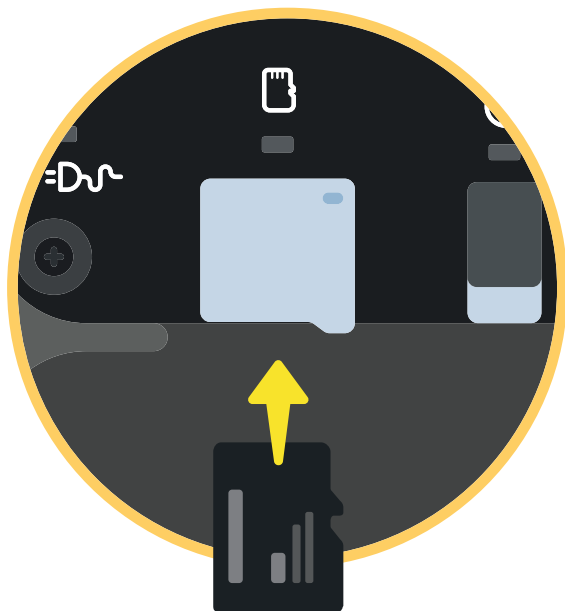
UNDO



NEW



Want to know a little secret? You can increase the storage by inserting your own SD card



Something not working? Get help fast at help.kano.me



Search these help codes

Computer start-up issues

KPC2

Wi-Fi troubleshooting

KPC3

Keyboard troubleshooting

KPC4

Warranty and replacement parts

KPC5

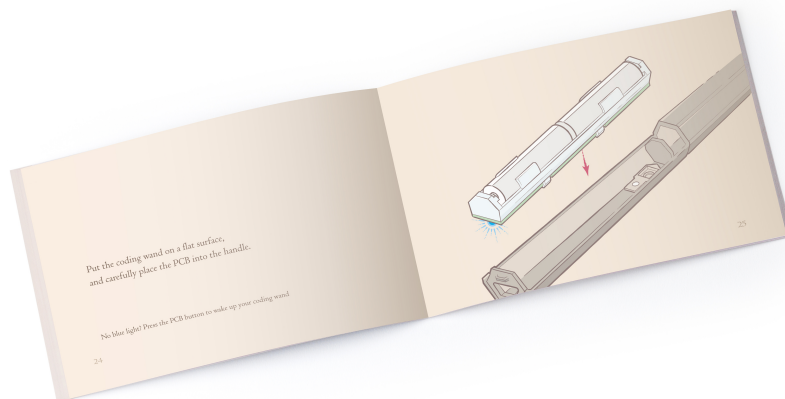
Need help?



help.kano.me

Help with anything from kits to coding





Harry Potter characters, names, and related
indicia are © & ™ Warner Bros. Entertainment.
Publishing Rights © JKR. (s18)

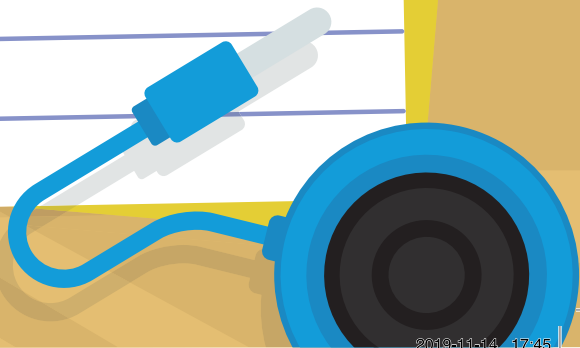


LOOK CLOSELY

WOW

You've just built
your own PC.
Now...How do you feel?







A Computer Anyone Can Make[™]
Anyone Can Make[™]

COPYRIGHT © KANO COMPUTING LTD 2019.
ALL RIGHTS RESERVED 19G9044-01C