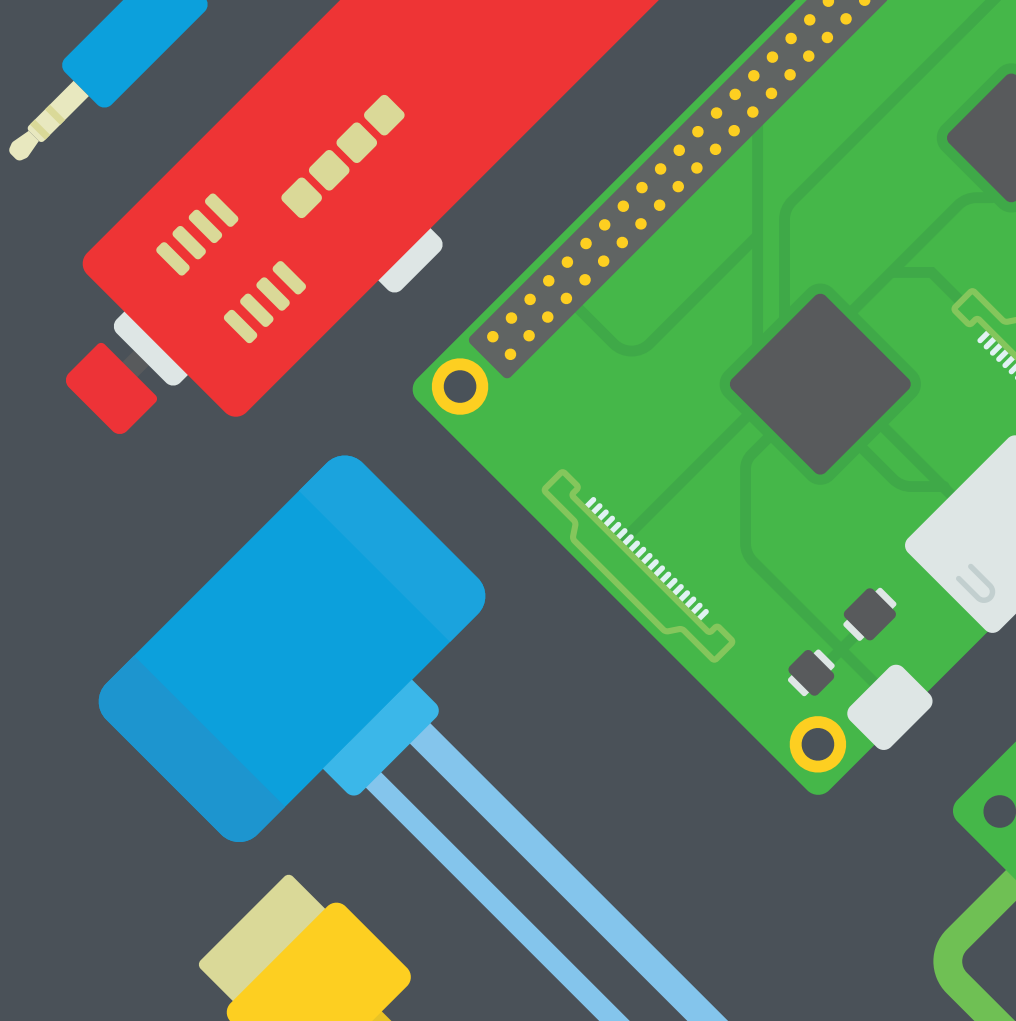


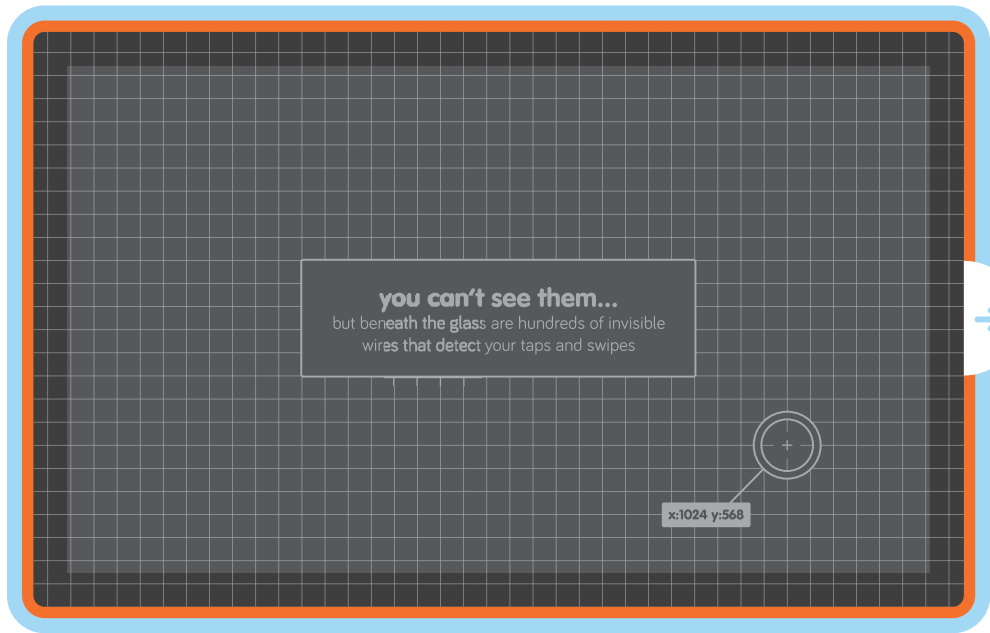
How to make a tablet



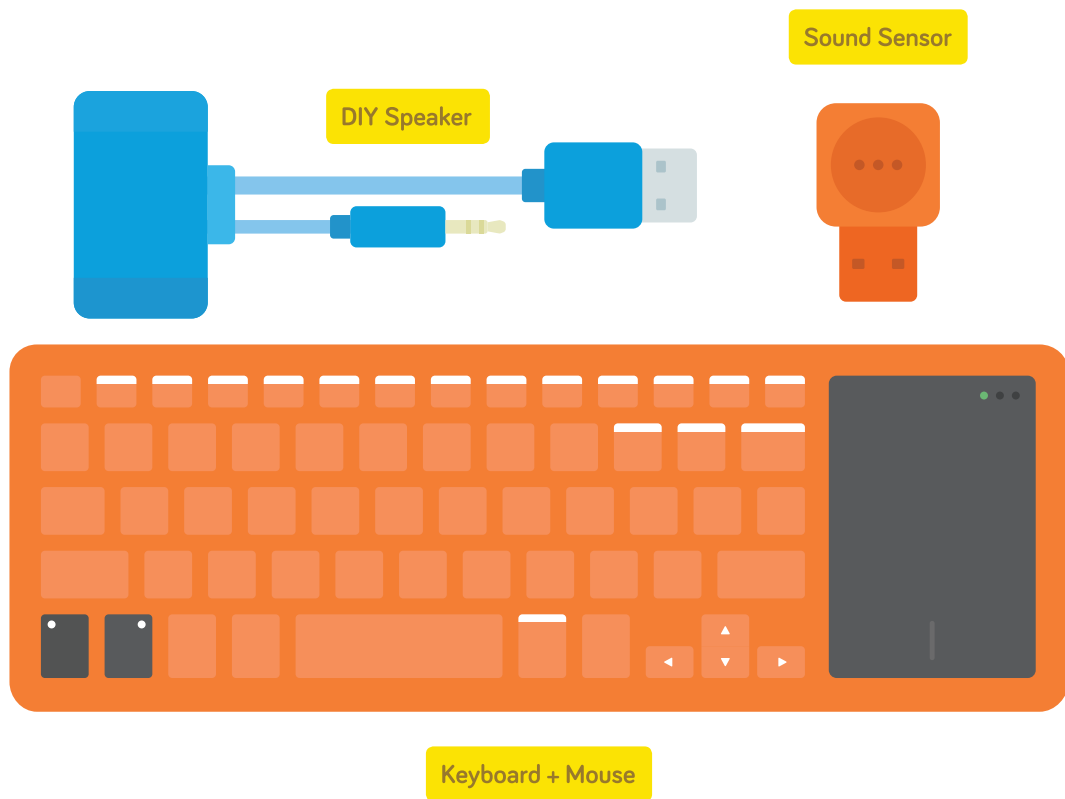


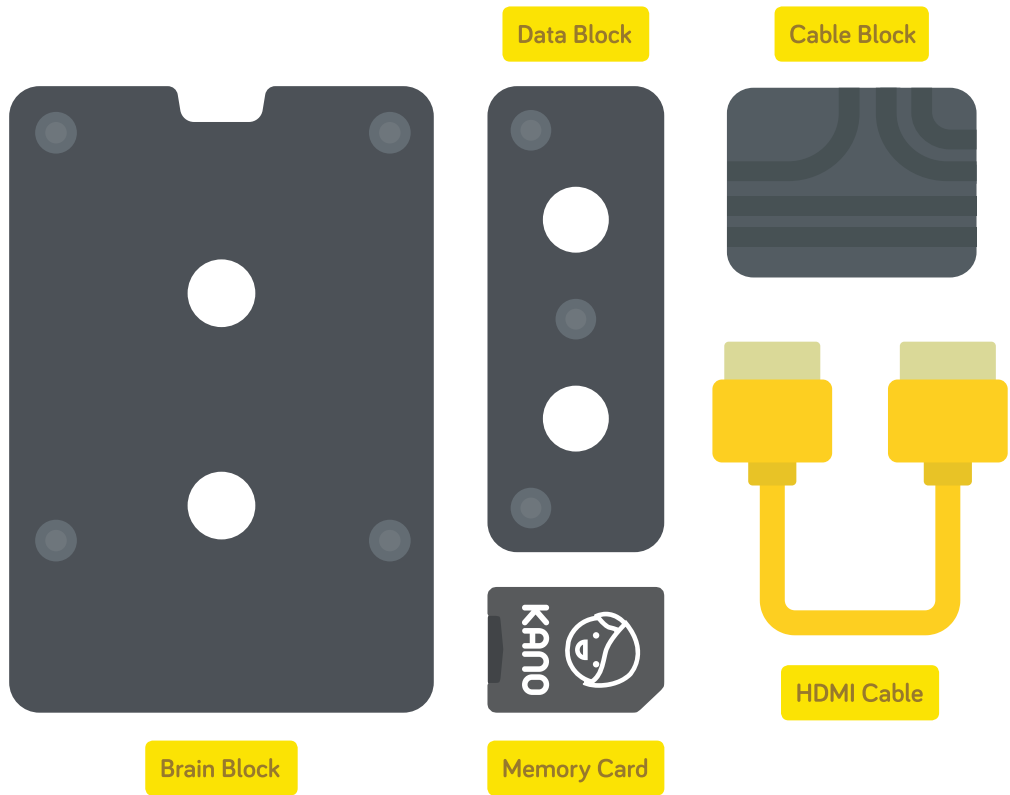
Hey! I'm Judoka, your computer companion. Ready to go?

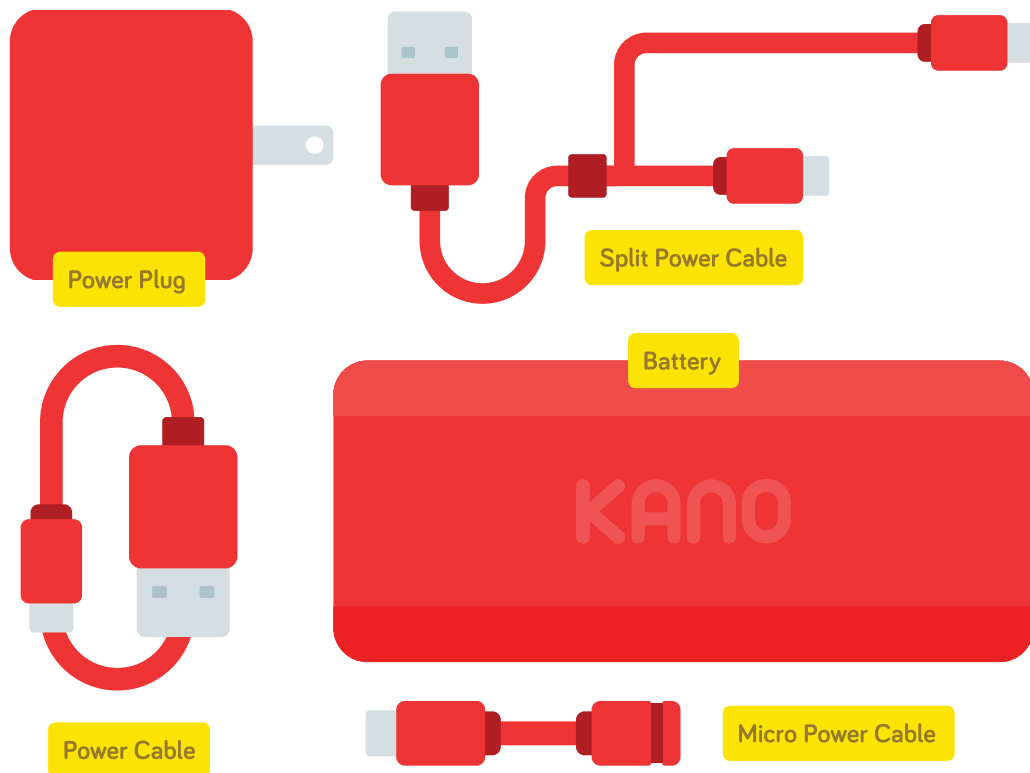
Take out the pieces!

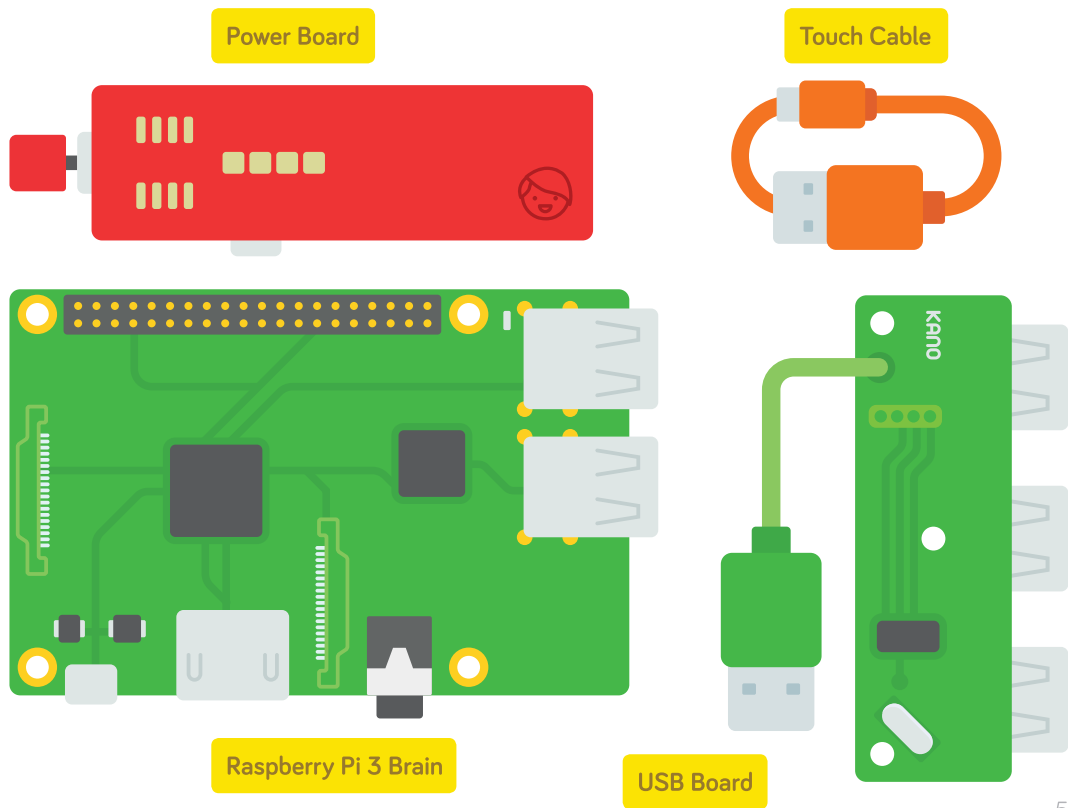


Screen

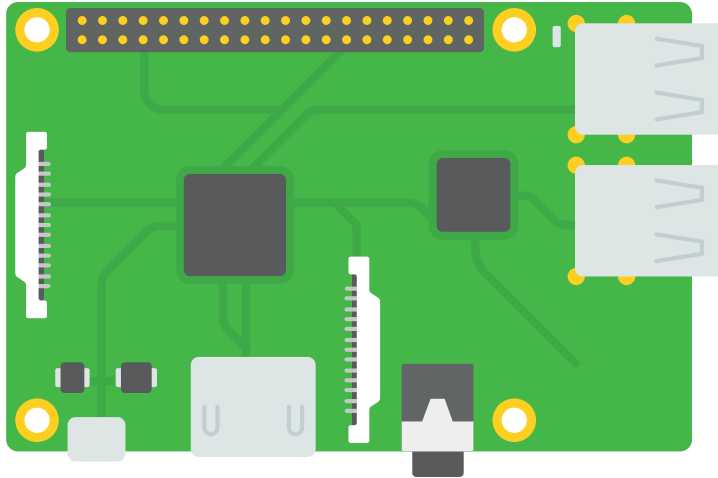






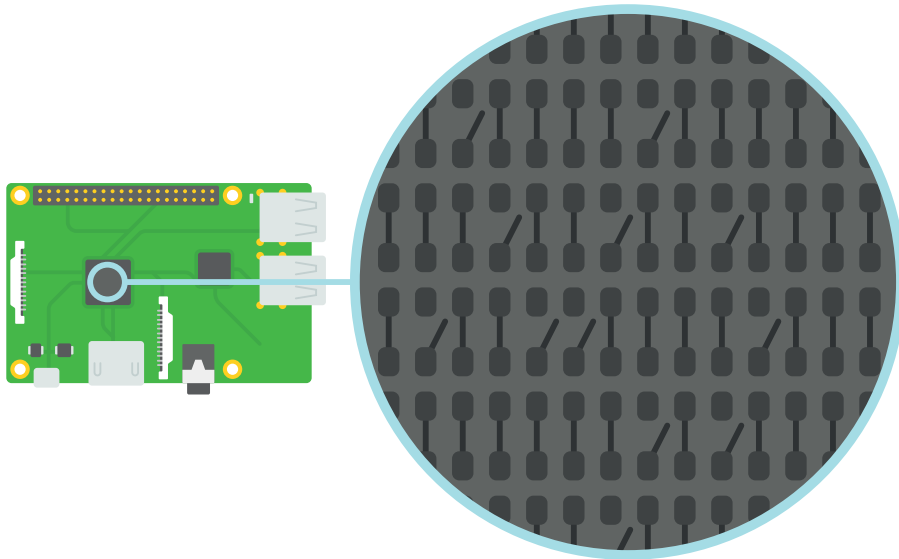


This is your computer's brain



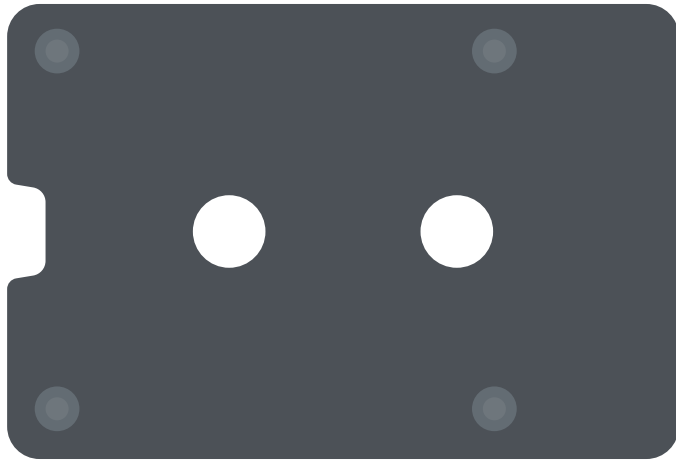
It's tiny, but powerful

How does your computer think? If you look deep inside...



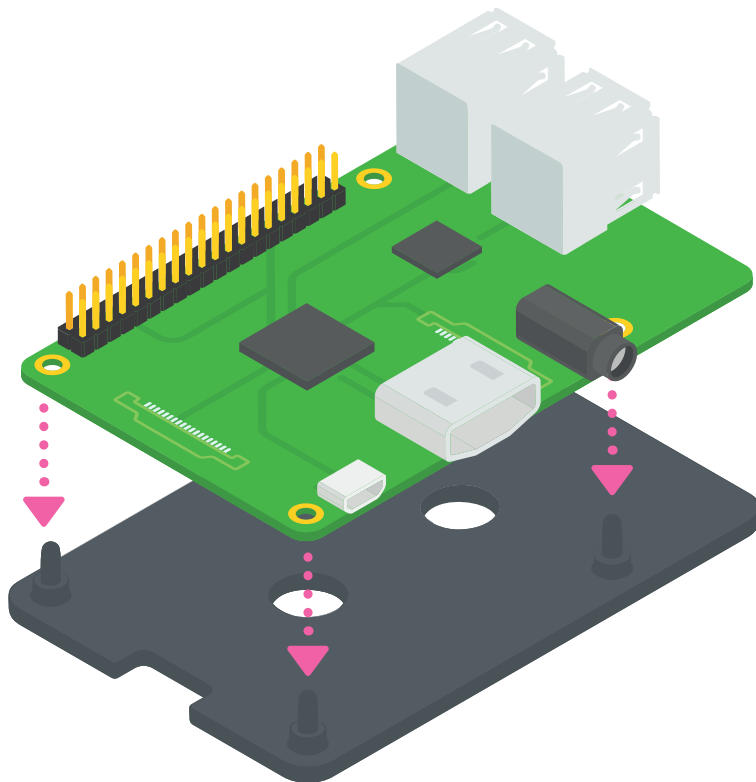
It's made of billions of electric switches

Grab the brain block



This will keep the brain in place

Push the brain onto the block, using the holes



Push it all the way down



Make sure it's snug

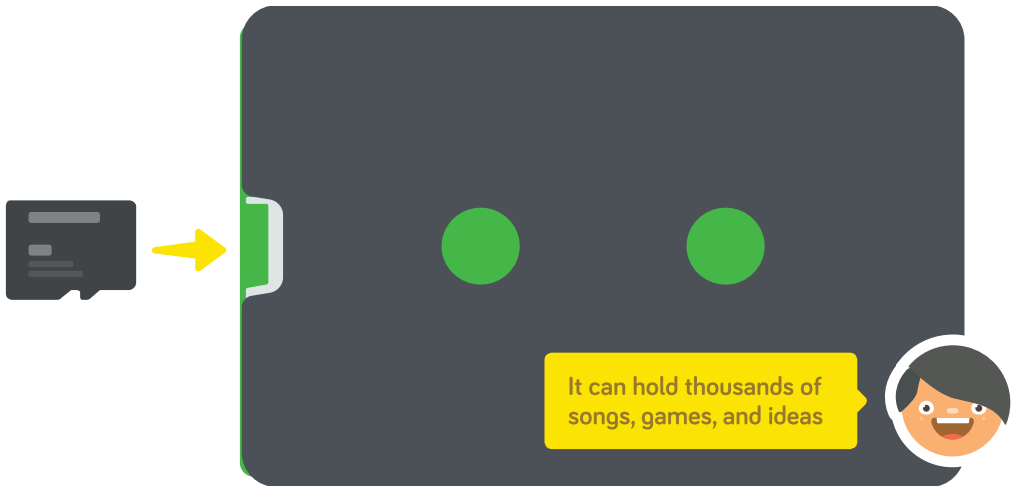


Let's give your brain new powers



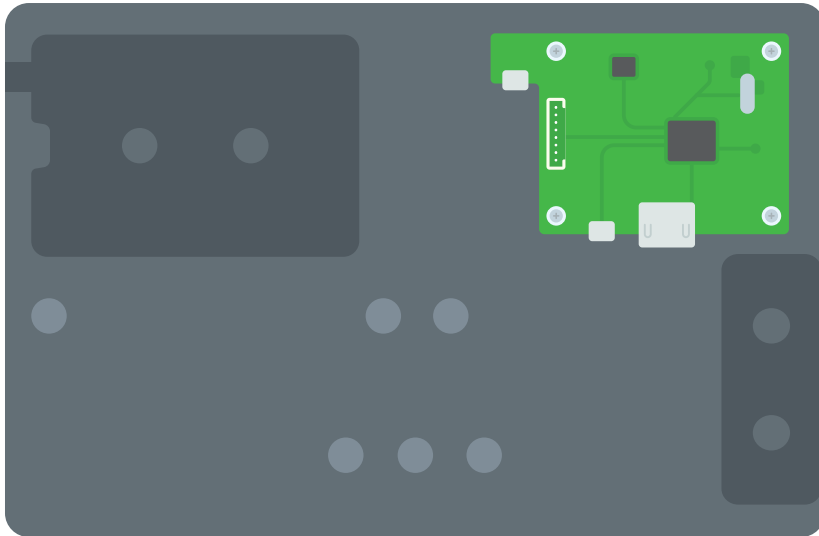
Grab the memory card, and slide out the micro card

Turn the brain over

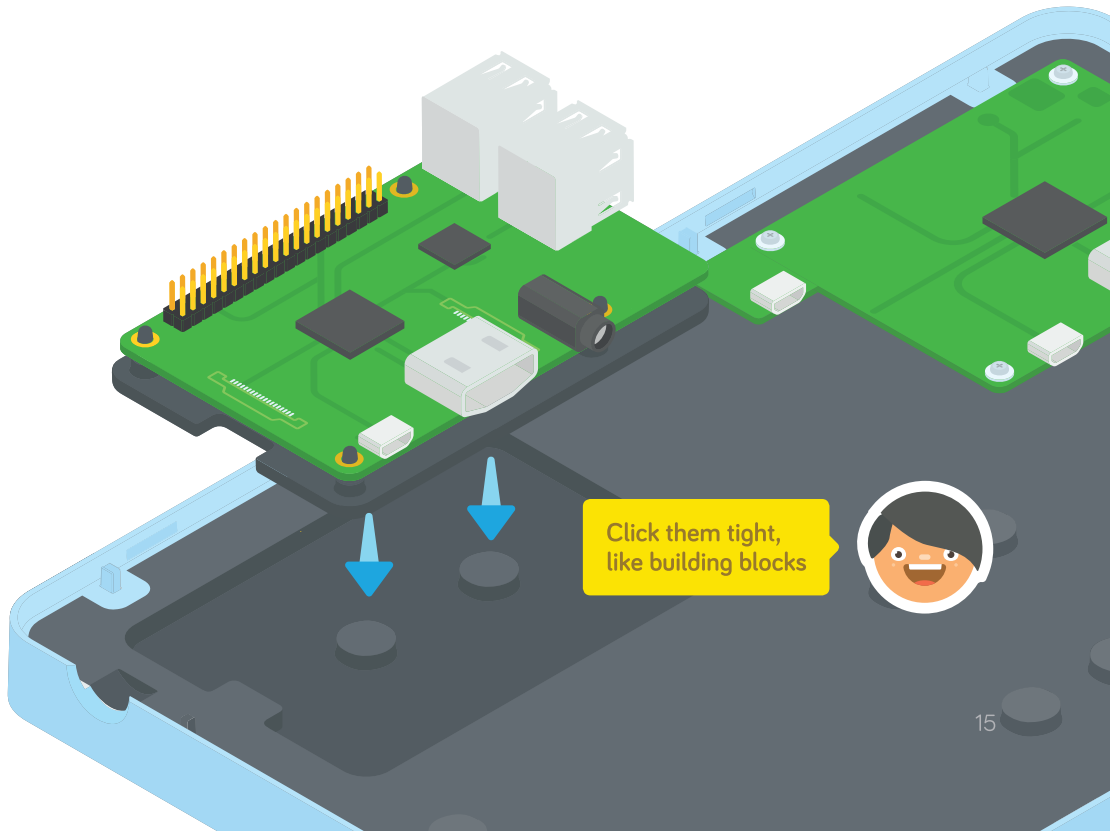


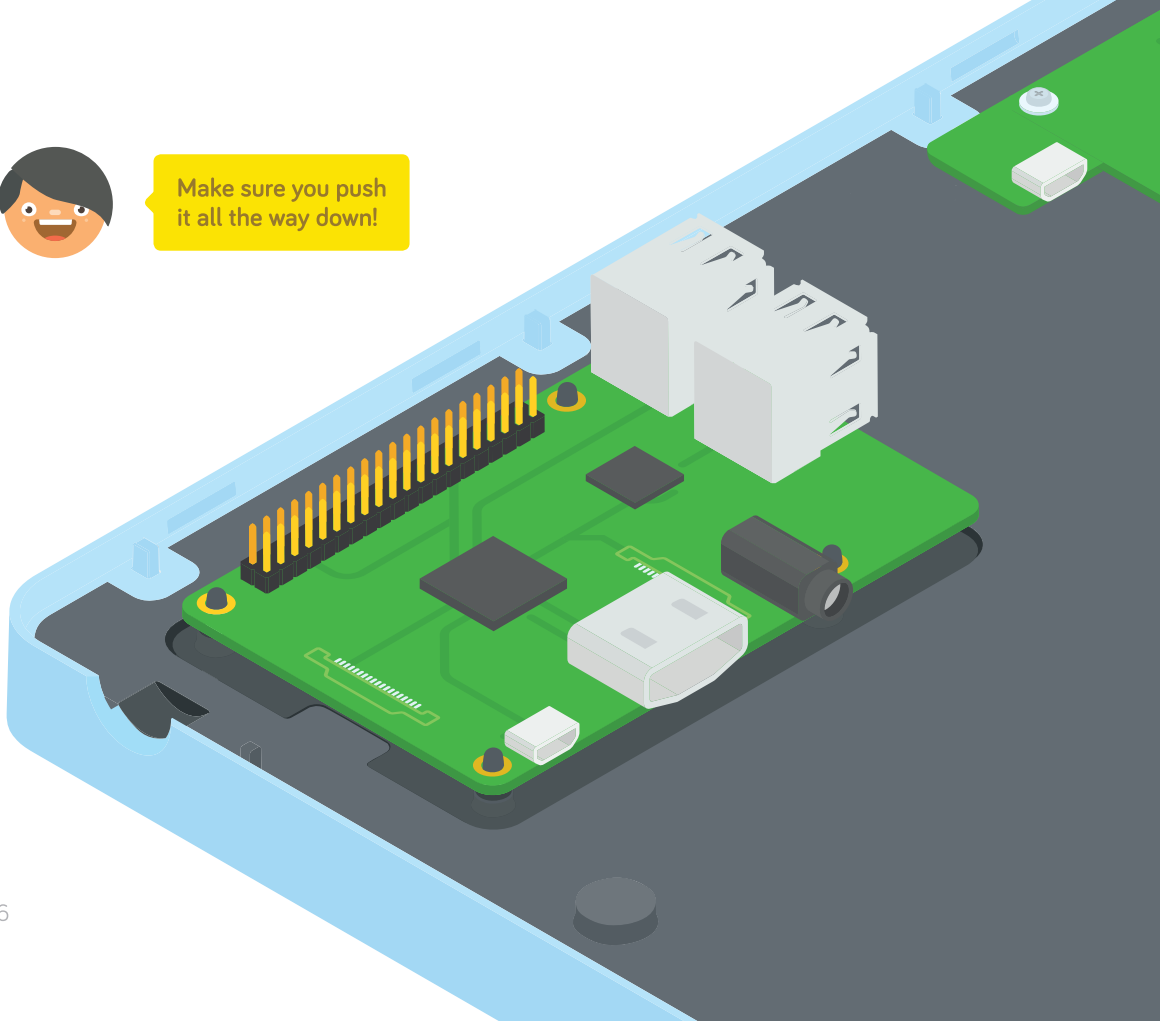
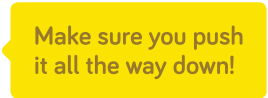
Slide in the micro card securely.
If you can't slide it in take the brain off and flip it round

Pick up the screen

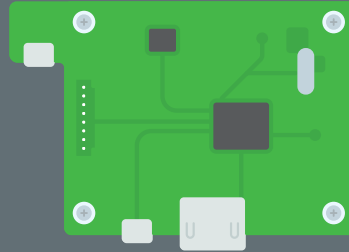
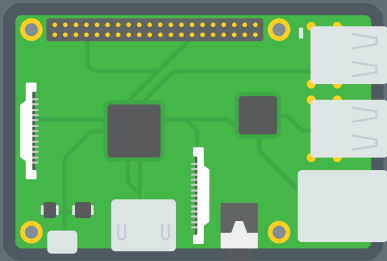


Now plug the brain onto the screen

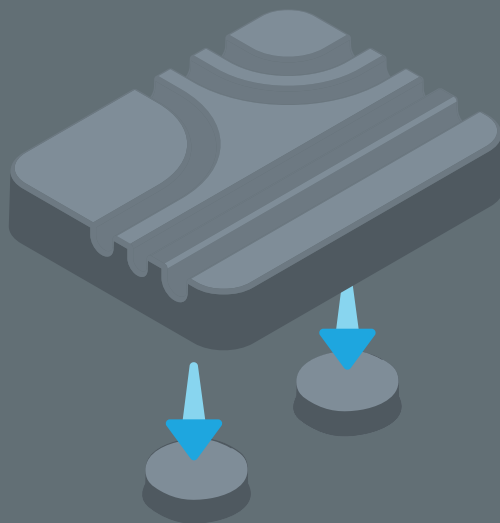




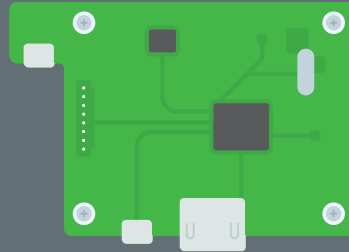
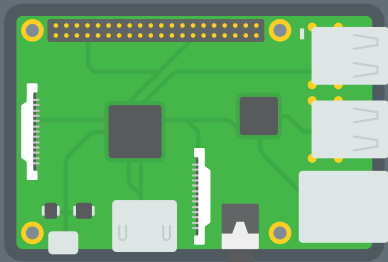
Great! Brain in place



Grab the cable block...



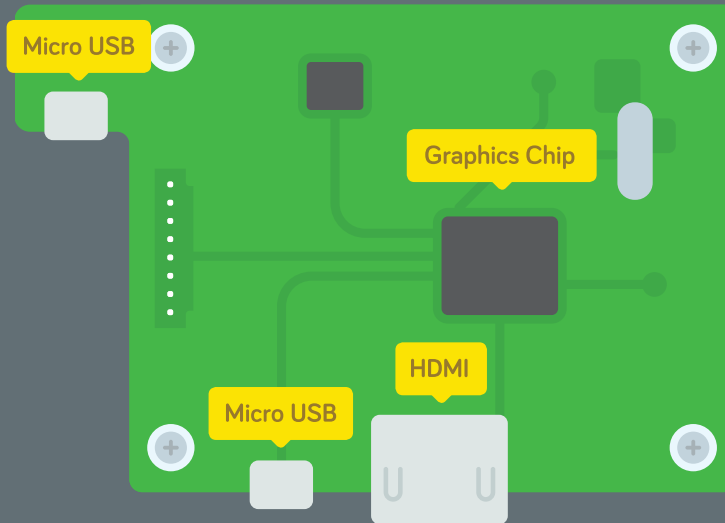
Snap it onto the screen



This will keep your
cables organised!

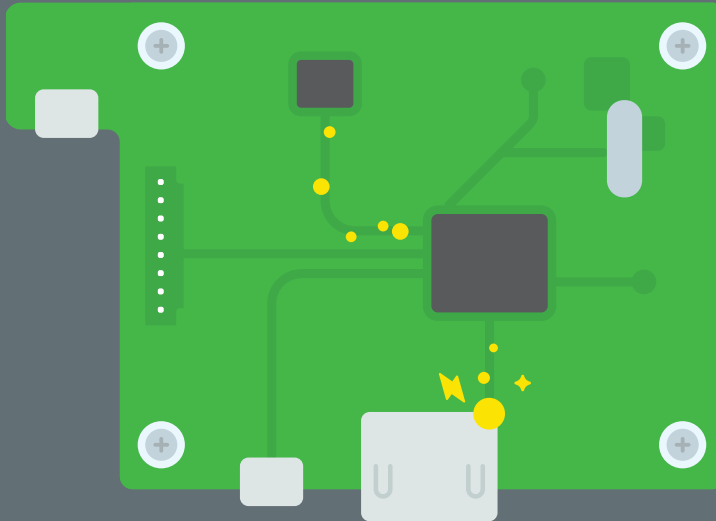


Can you see the driver board?



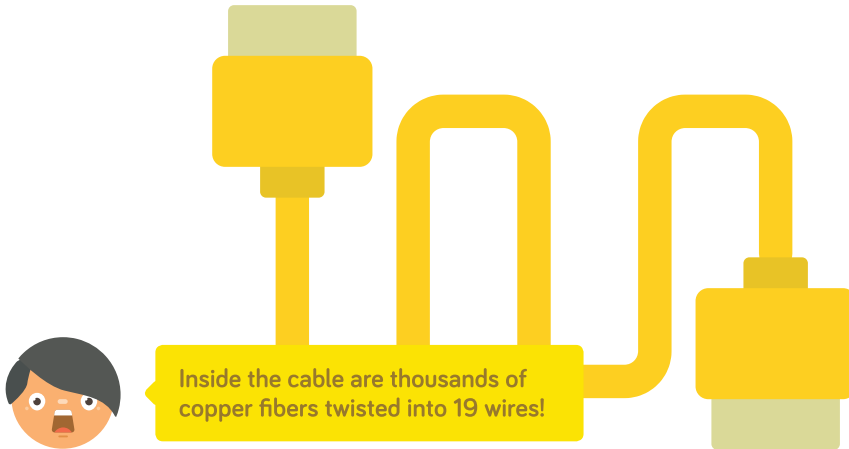
It's the screen's command center

The driver board gets millions of messages from your computer every second

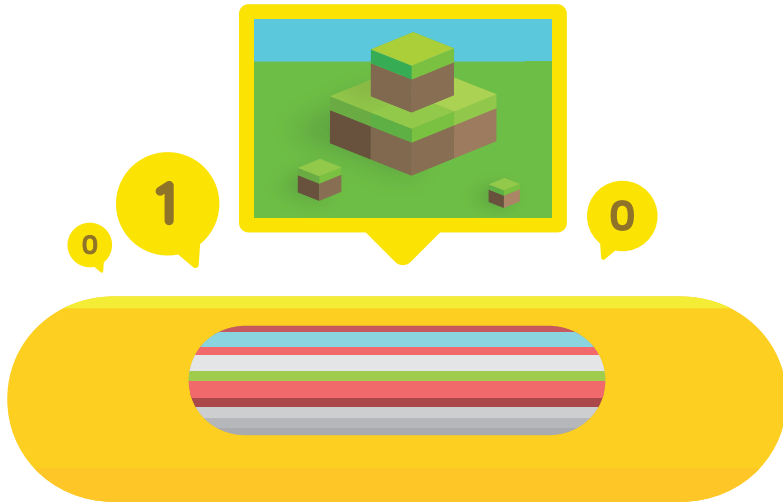


...and passes them to your screen

Grab the yellow HDMI cable

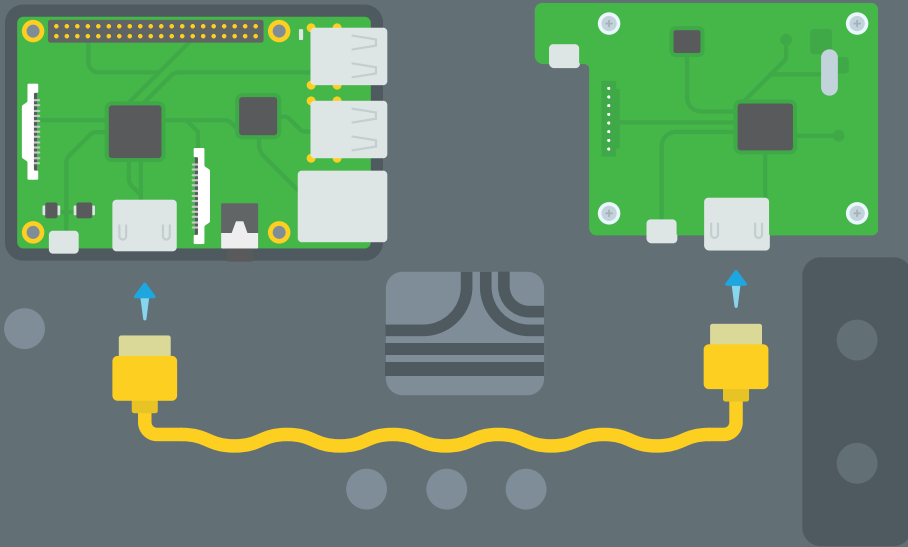


This cable will carry pictures from your computer to your screen



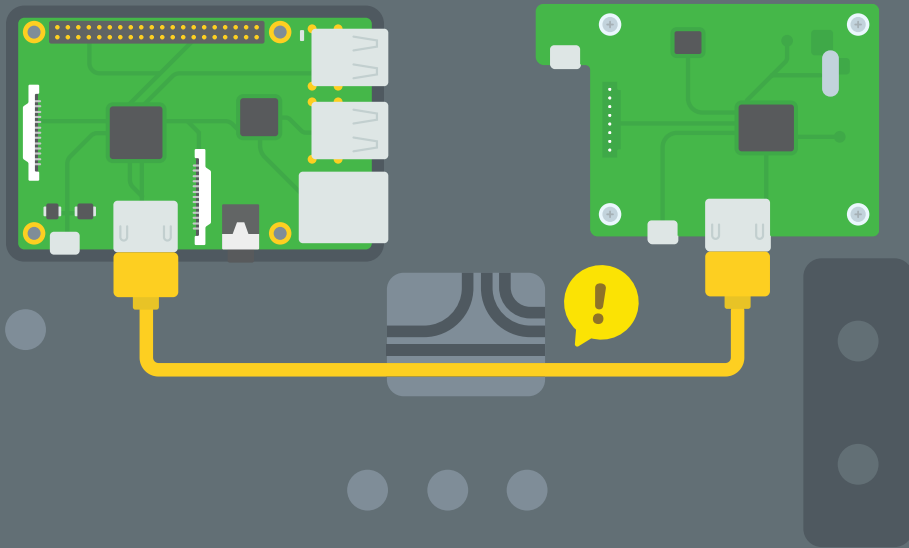
It sends images, video, and more, using binary code

Plug the yellow cable into the brain...



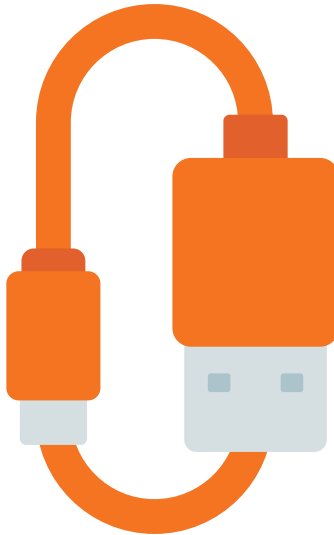
...then into the driver board

Once they're plugged in...

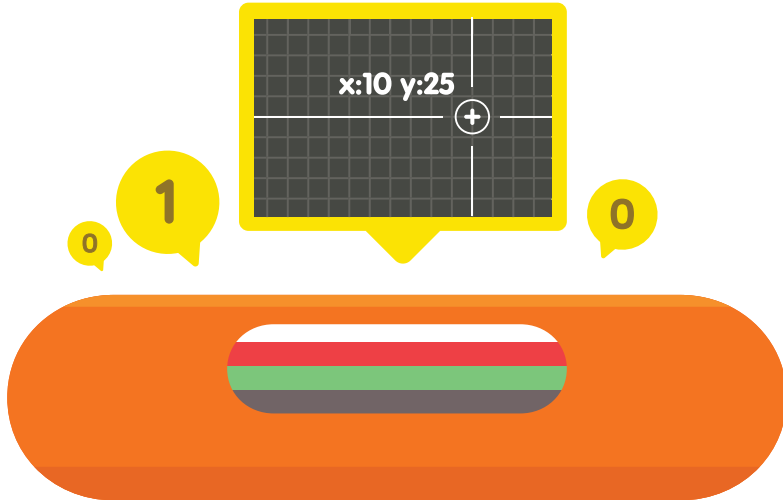


...push the cable into the channel

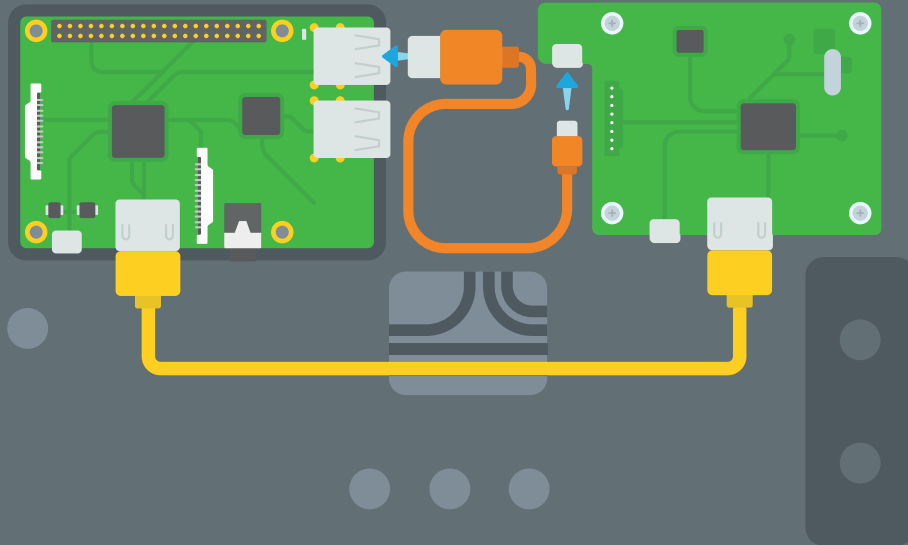
Grab the orange cable



This cable sends data when the screen is touched, to the computer.

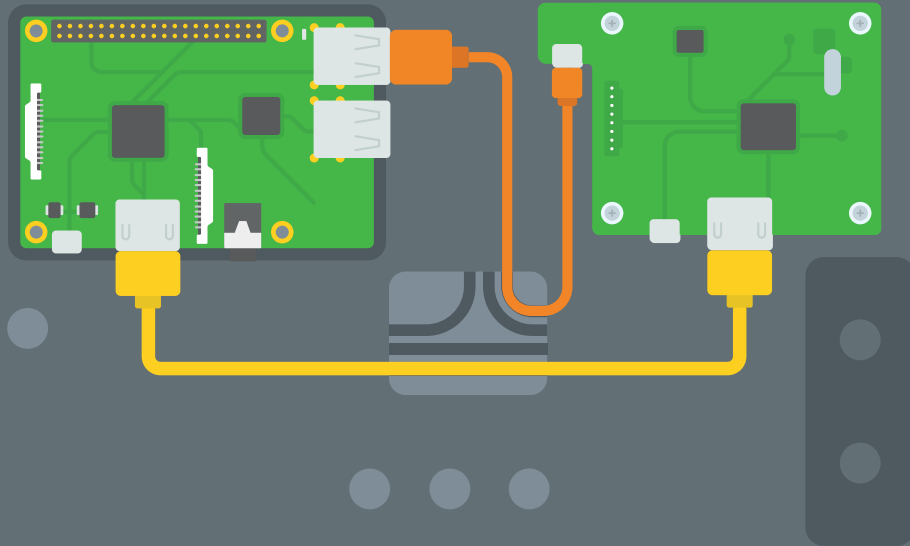


Plug the big end of the orange cable into the brain...

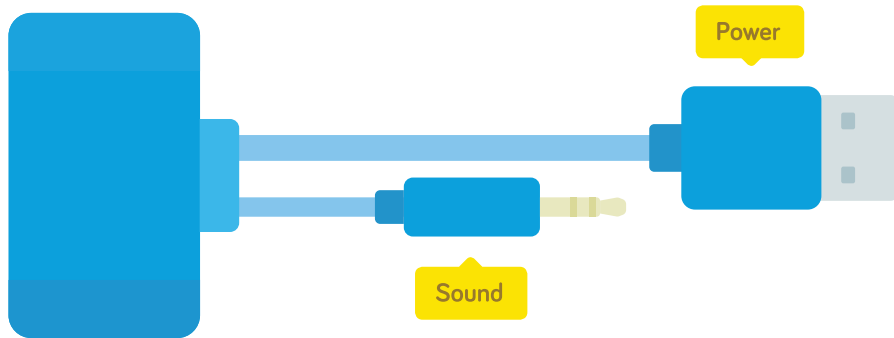


... and the small one into the driver board

Now push the cable into the channel, like this

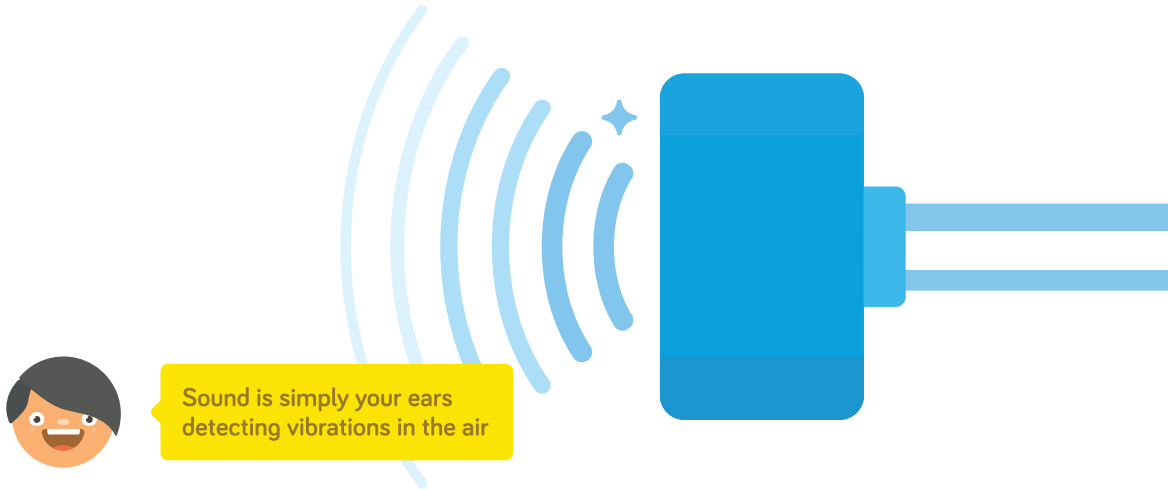


Time to give your computer a voice. Pick up the DIY Speaker



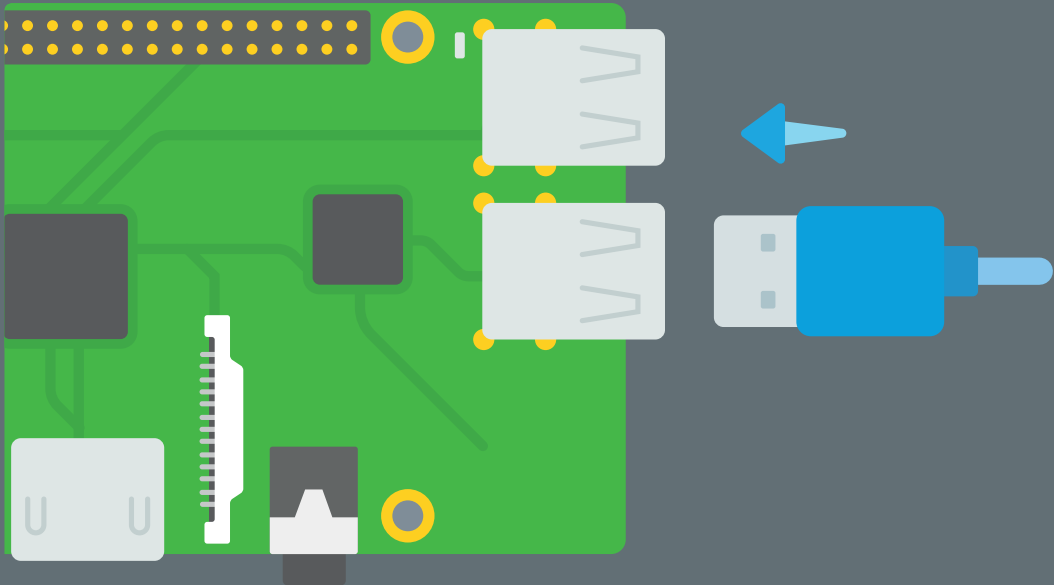
It has two cables. An audio jack for sound, and a USB cable for power

The audio cable sends signals

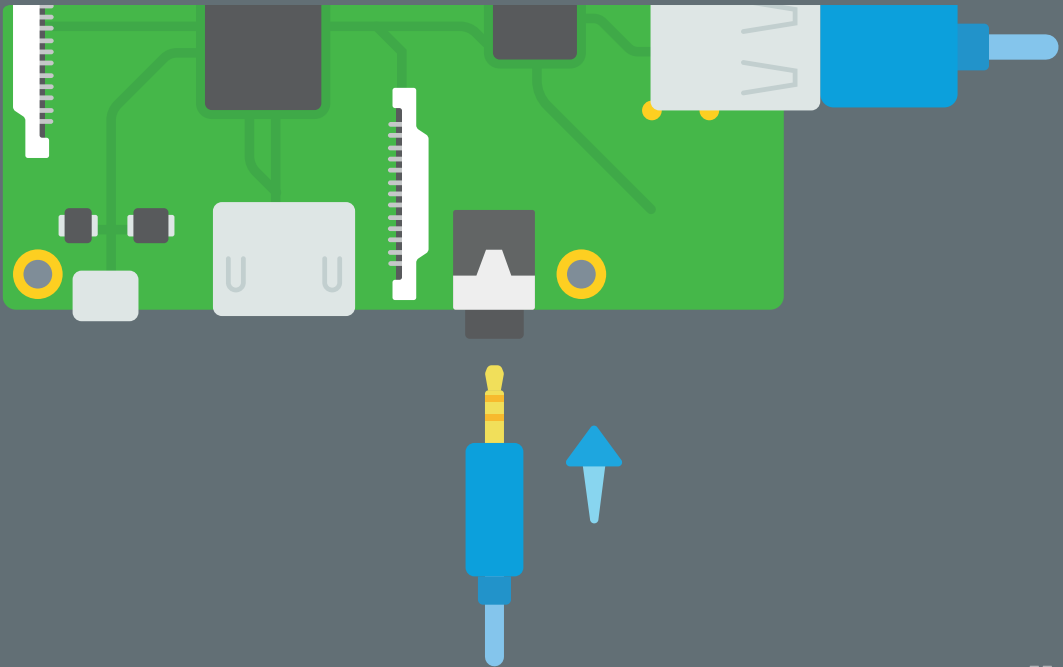


and they vibrate the magnet, membrane, and the air inside

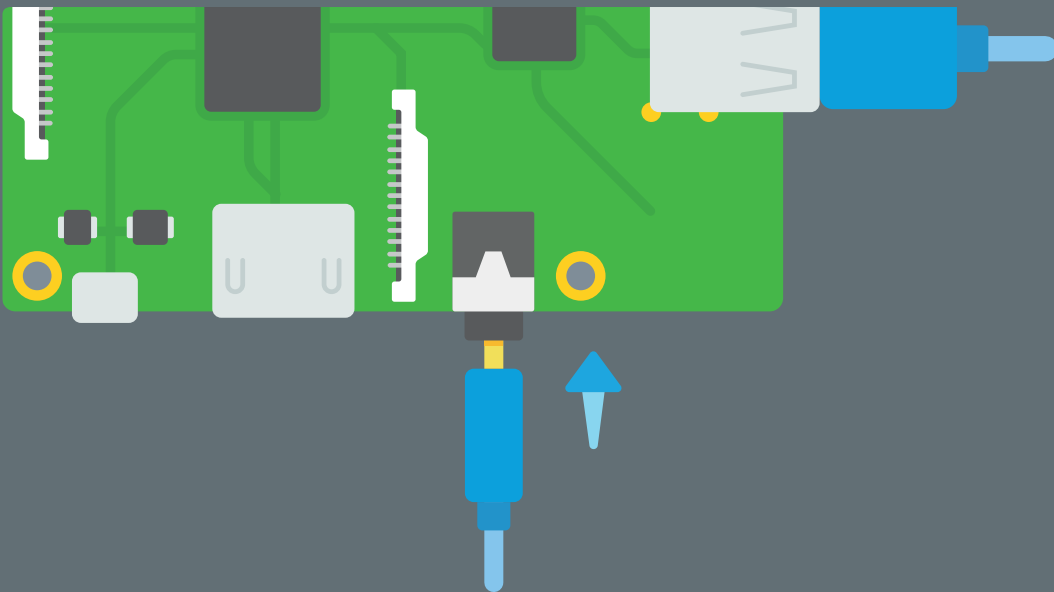
Plug the power cable into the brain's USB



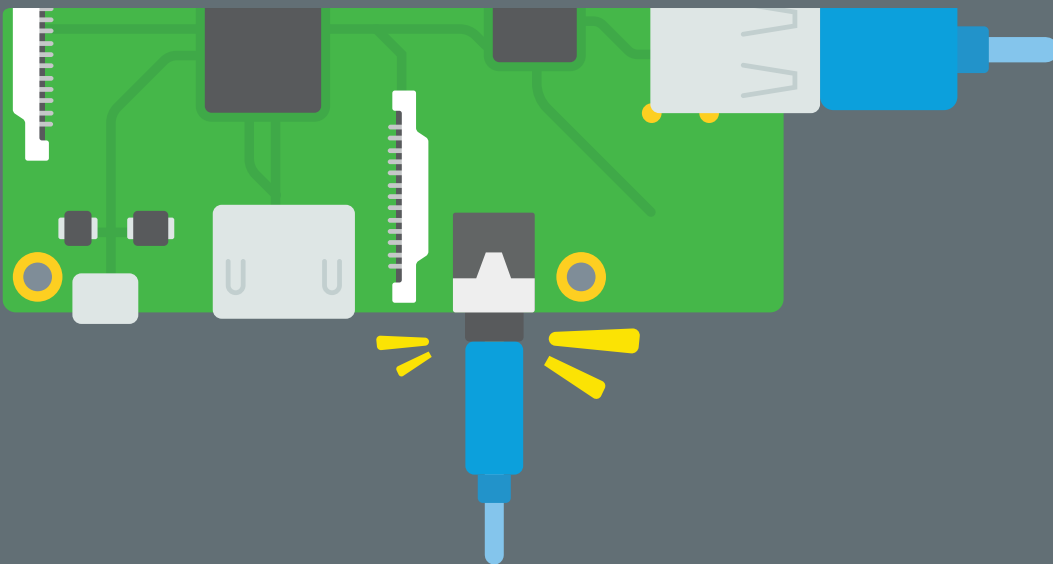
Now the audio jack

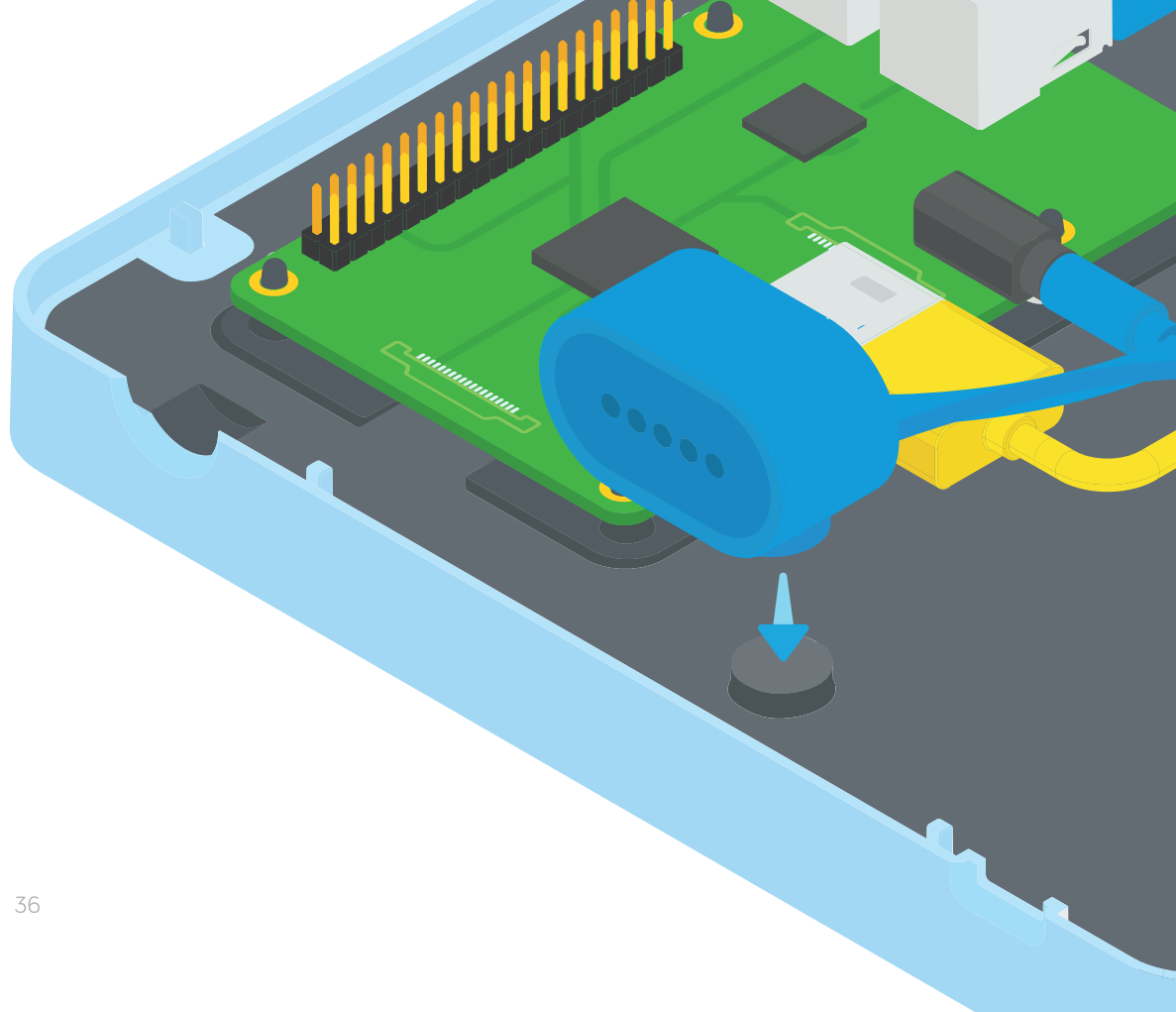


Make sure you plug the cable all the way in

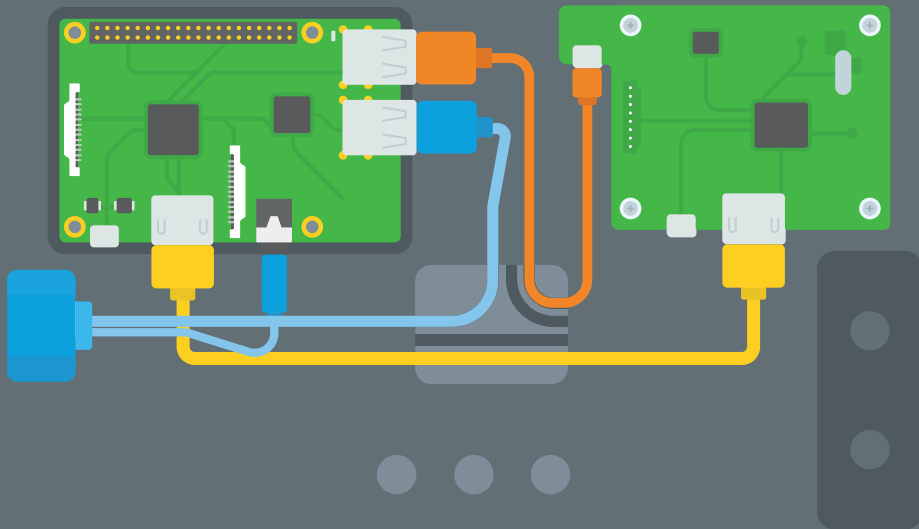


Great!

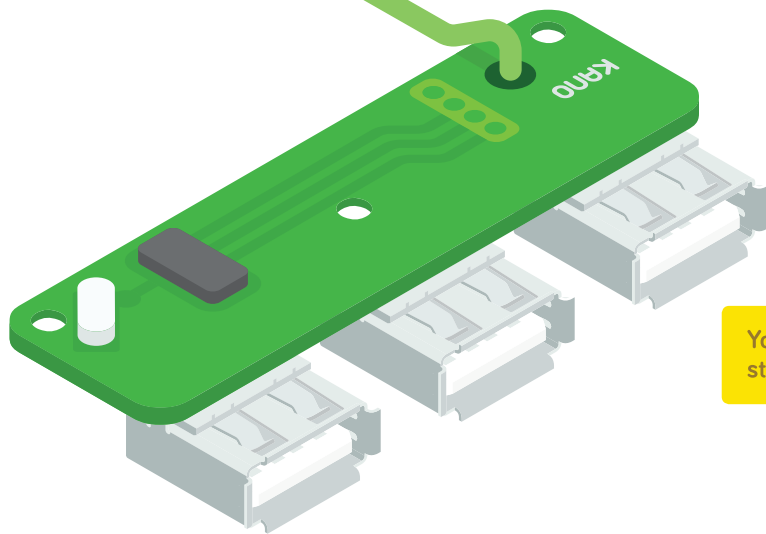




Push the cable into the cable block



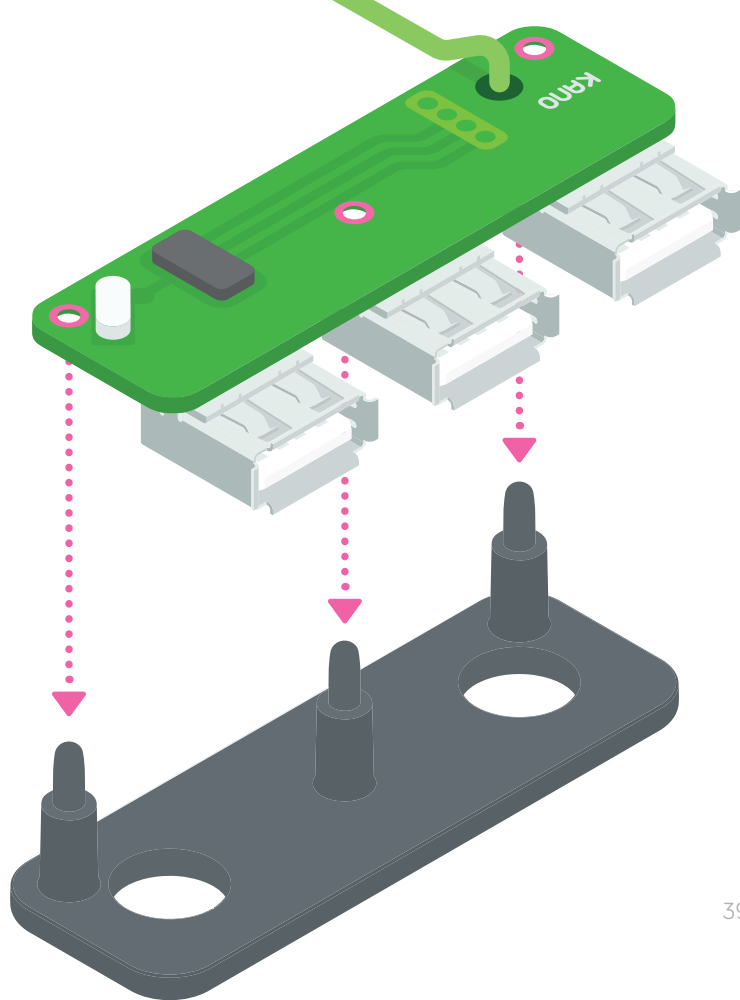
Grab the USB hub

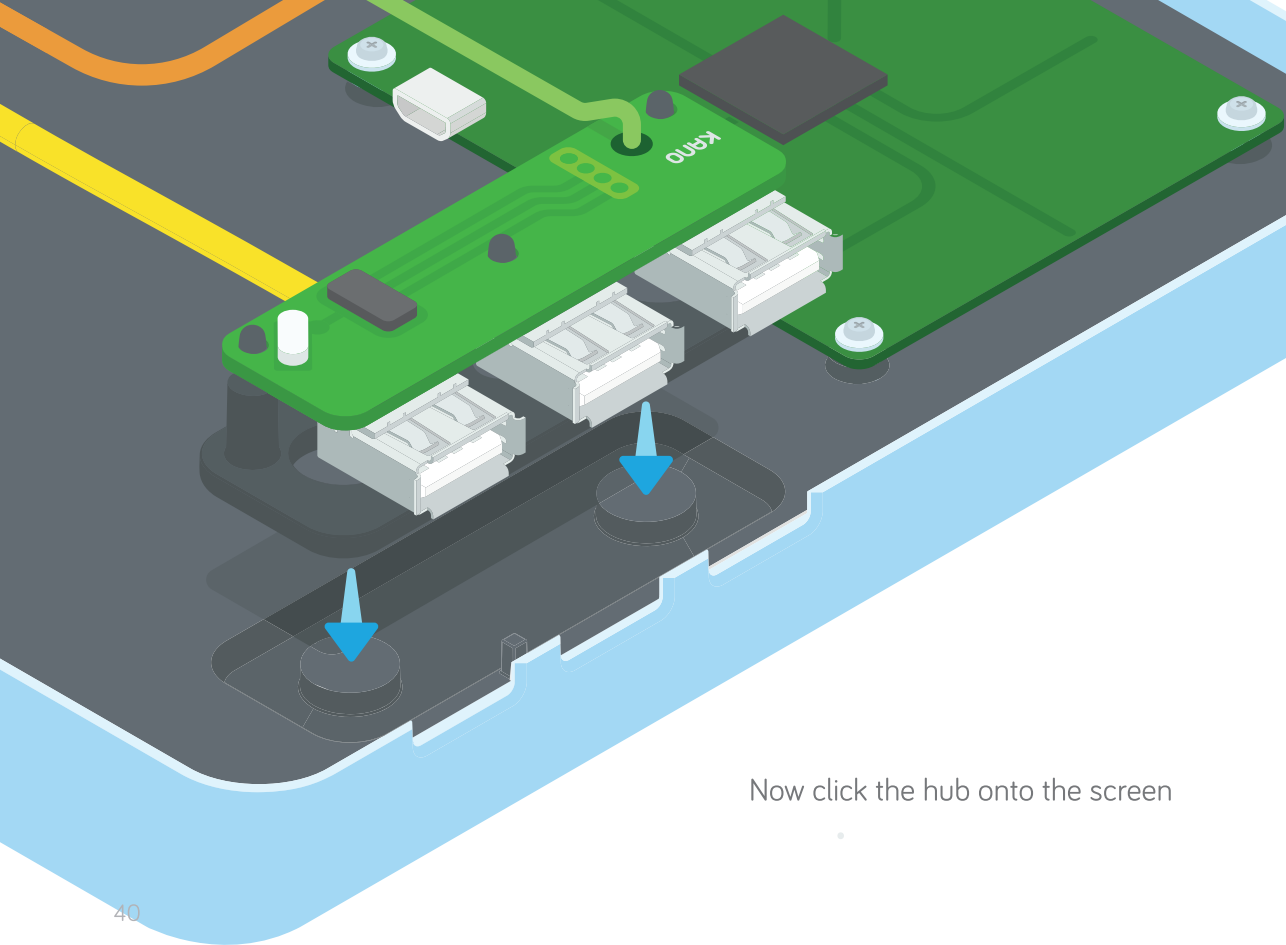


You can plug in memory sticks and Kano sensors



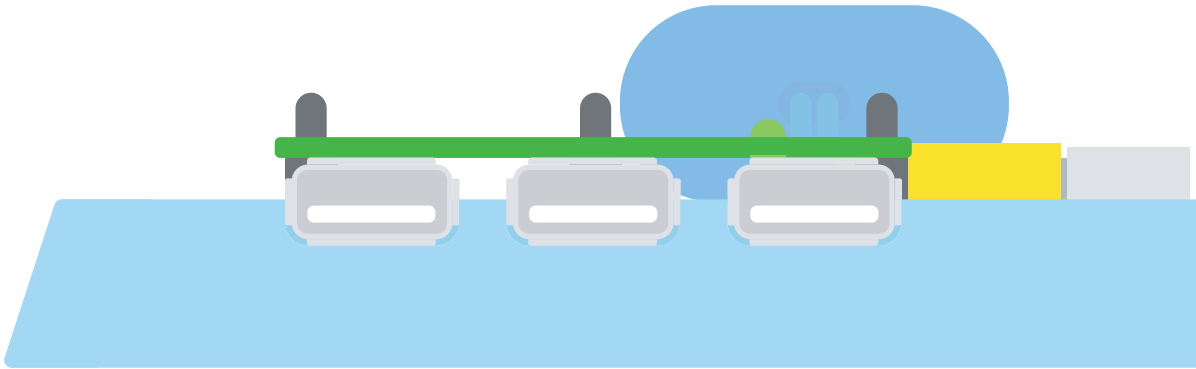
Push the hub onto the block, using the holes



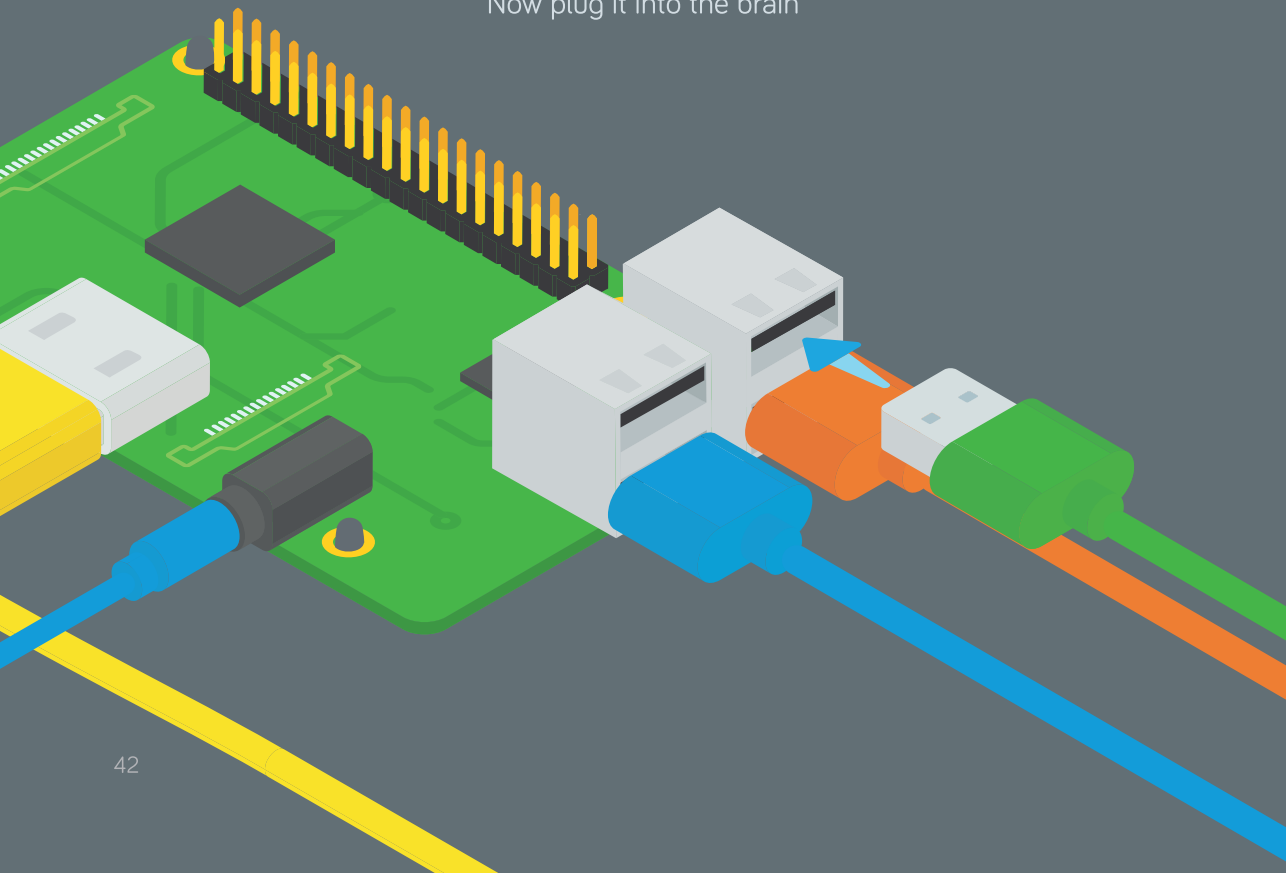


Now click the hub onto the screen

Make sure the USB ports fit properly, like this



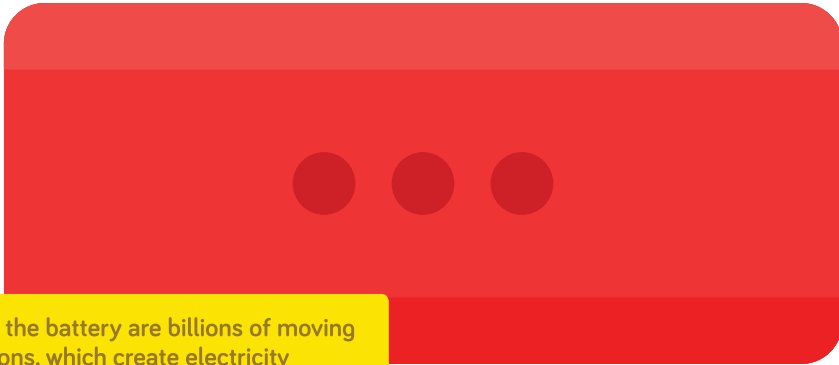
Now plug it into the brain





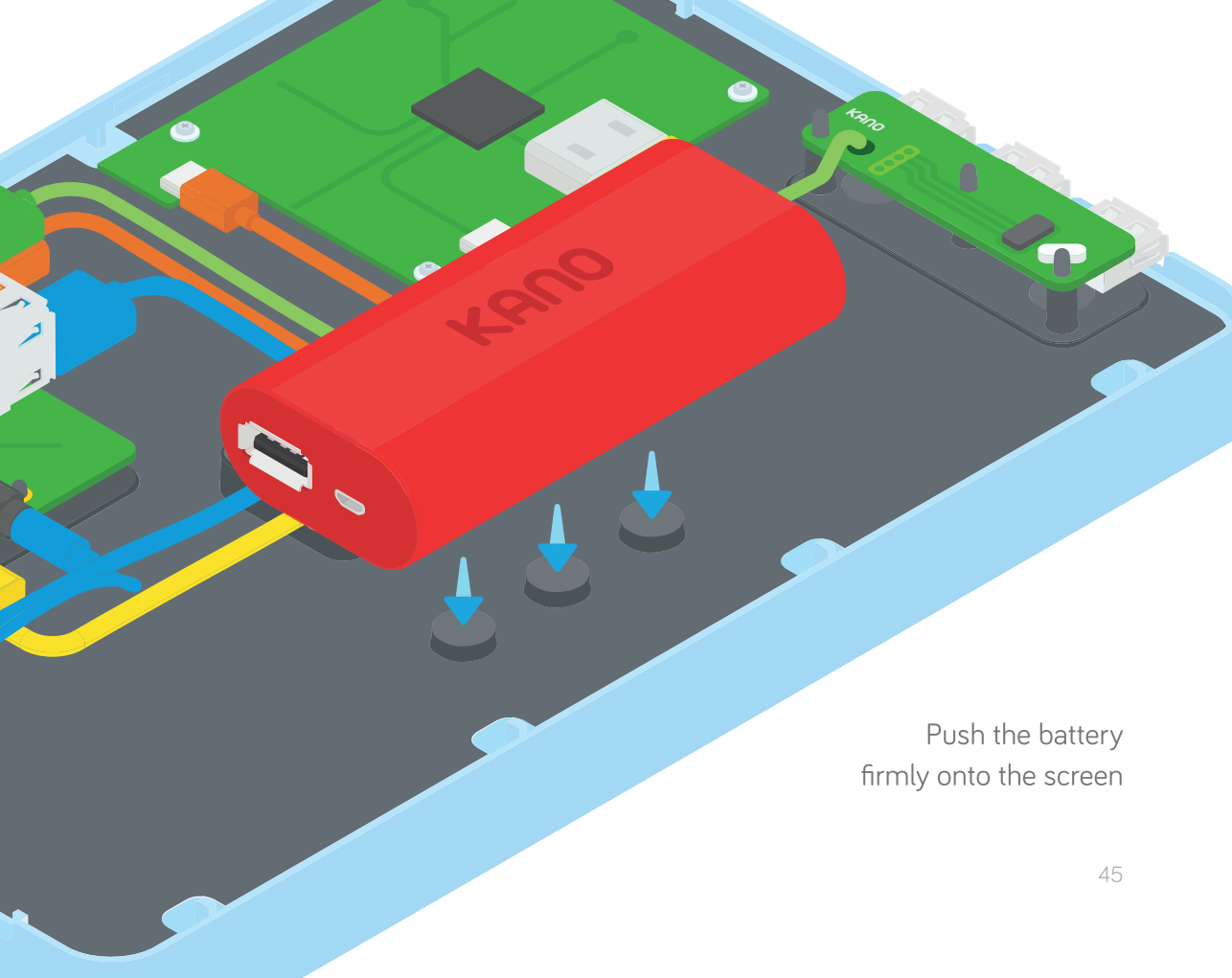
Don't forget to push the green cable into the channel

Lets add some electricity! Grab the battery



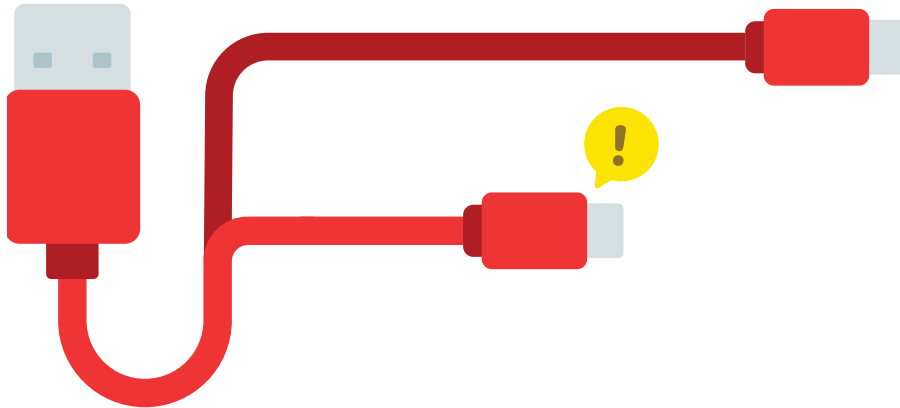
Inside the battery are billions of moving electrons, which create electricity



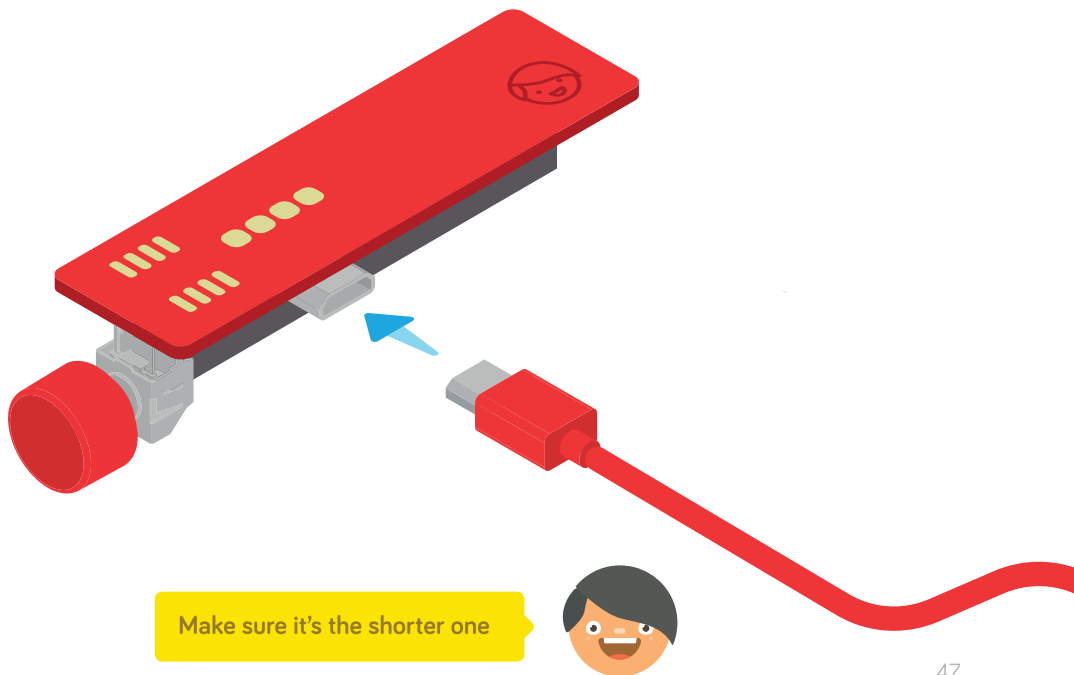


Push the battery
firmly onto the screen

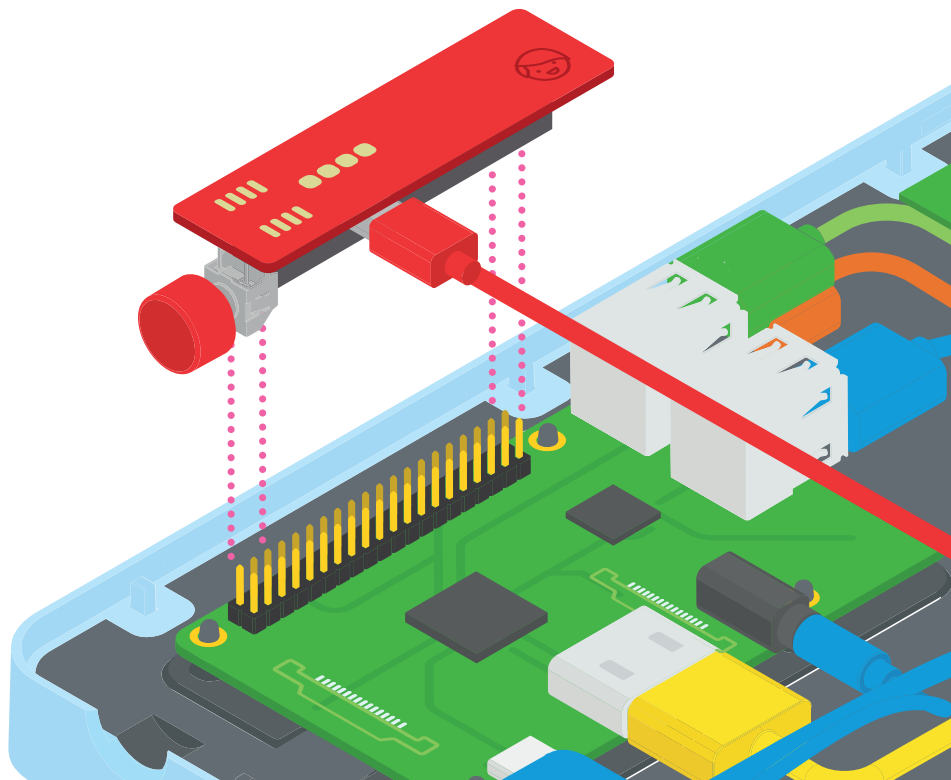
Now grab the short end of the red cable



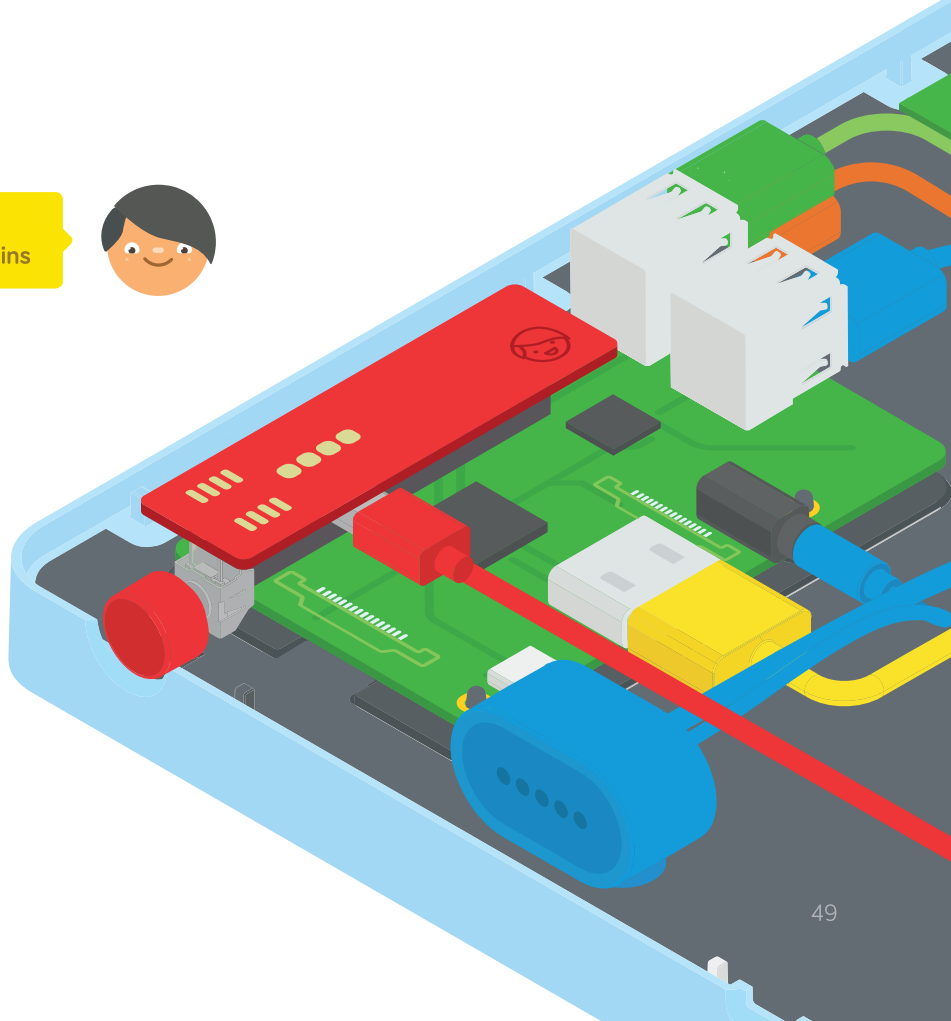
Plug it into the power board



Grab your power board and line it up with the brain's pins



Make sure it
covers all the pins



Now push it all the way down



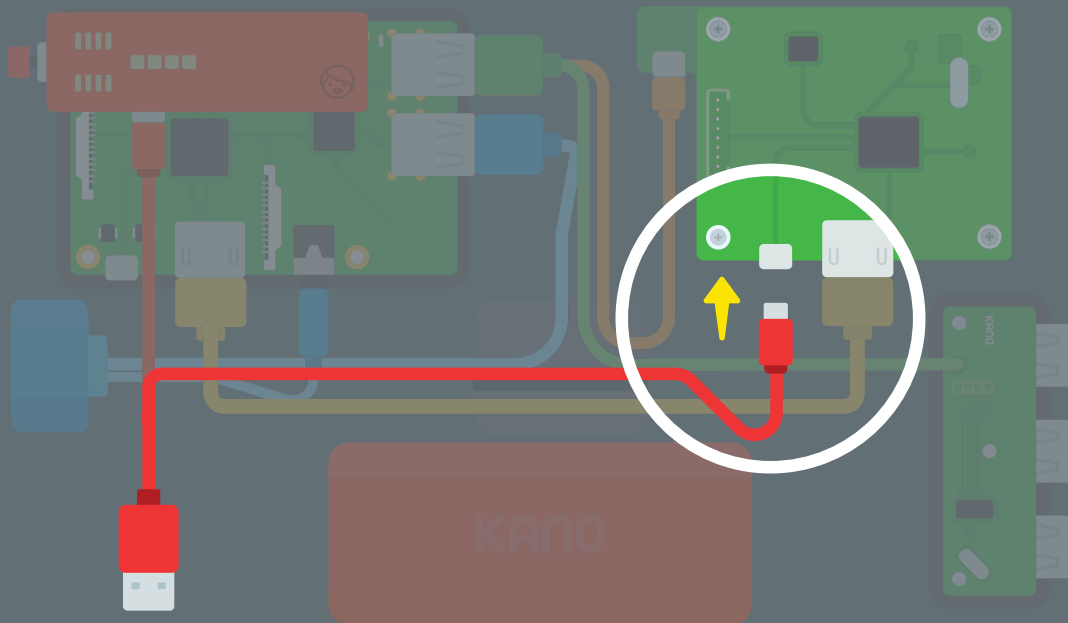
Great!



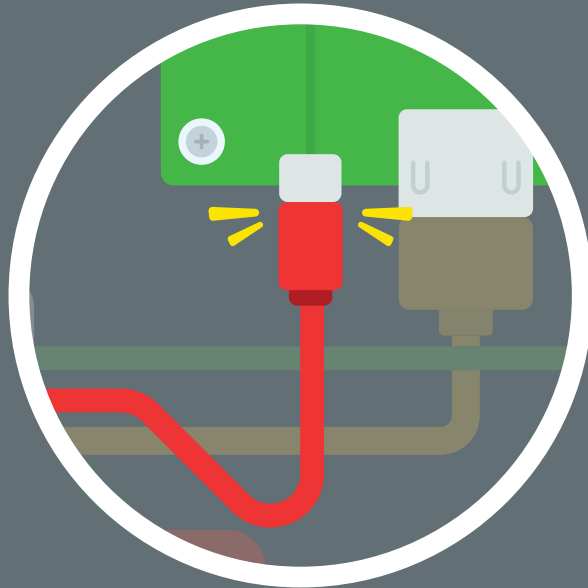
You connected the board to the
General Purpose Input and Output pins

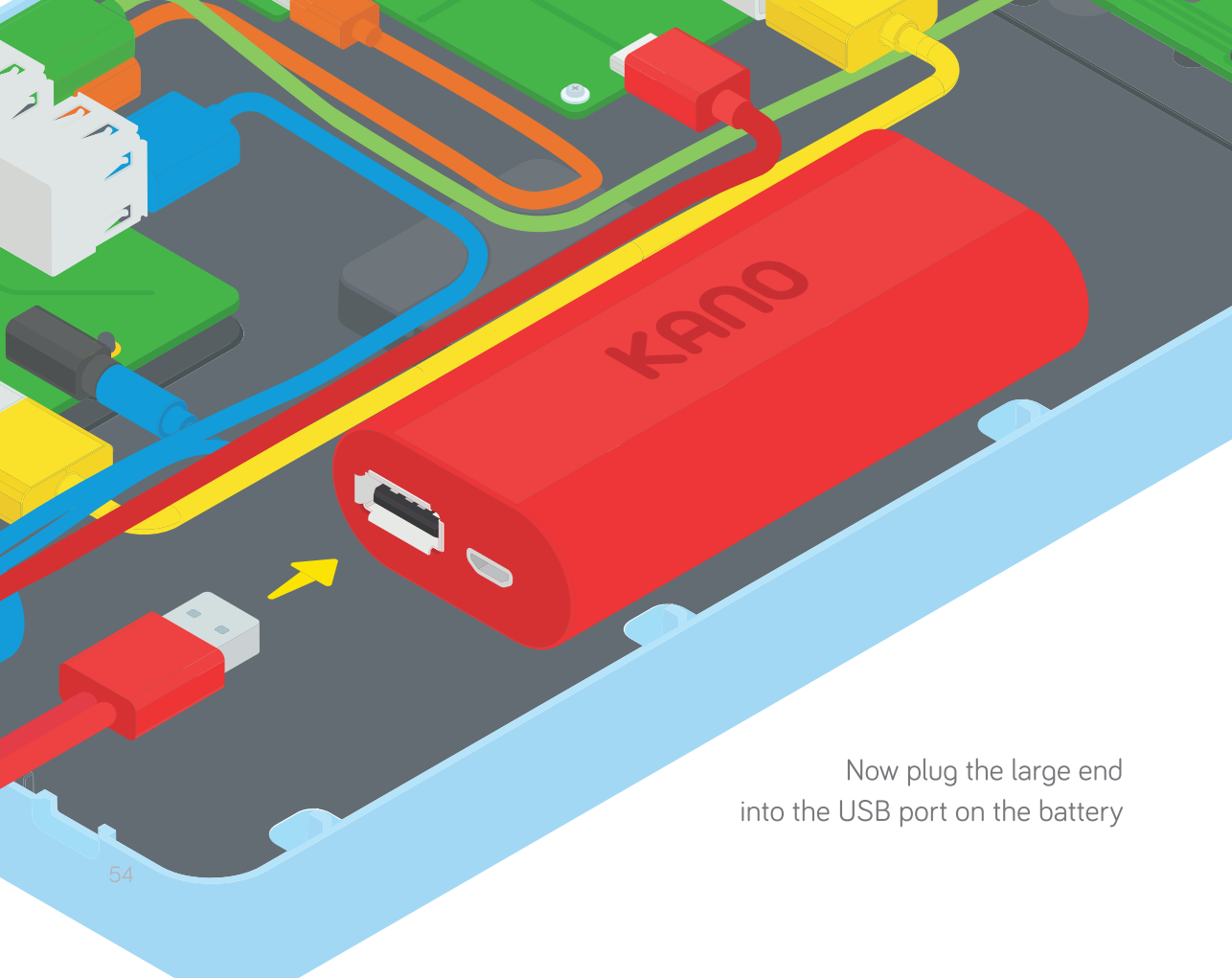


Take the longer end of the cable...

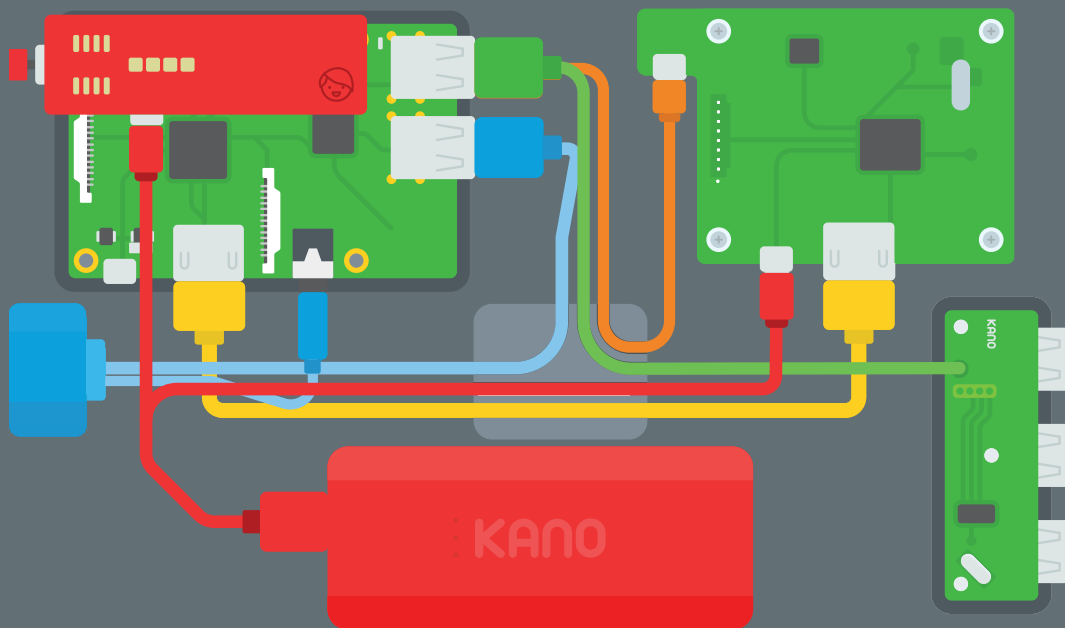


...and plug it into the screen's driver board

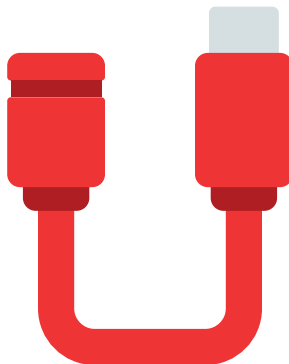


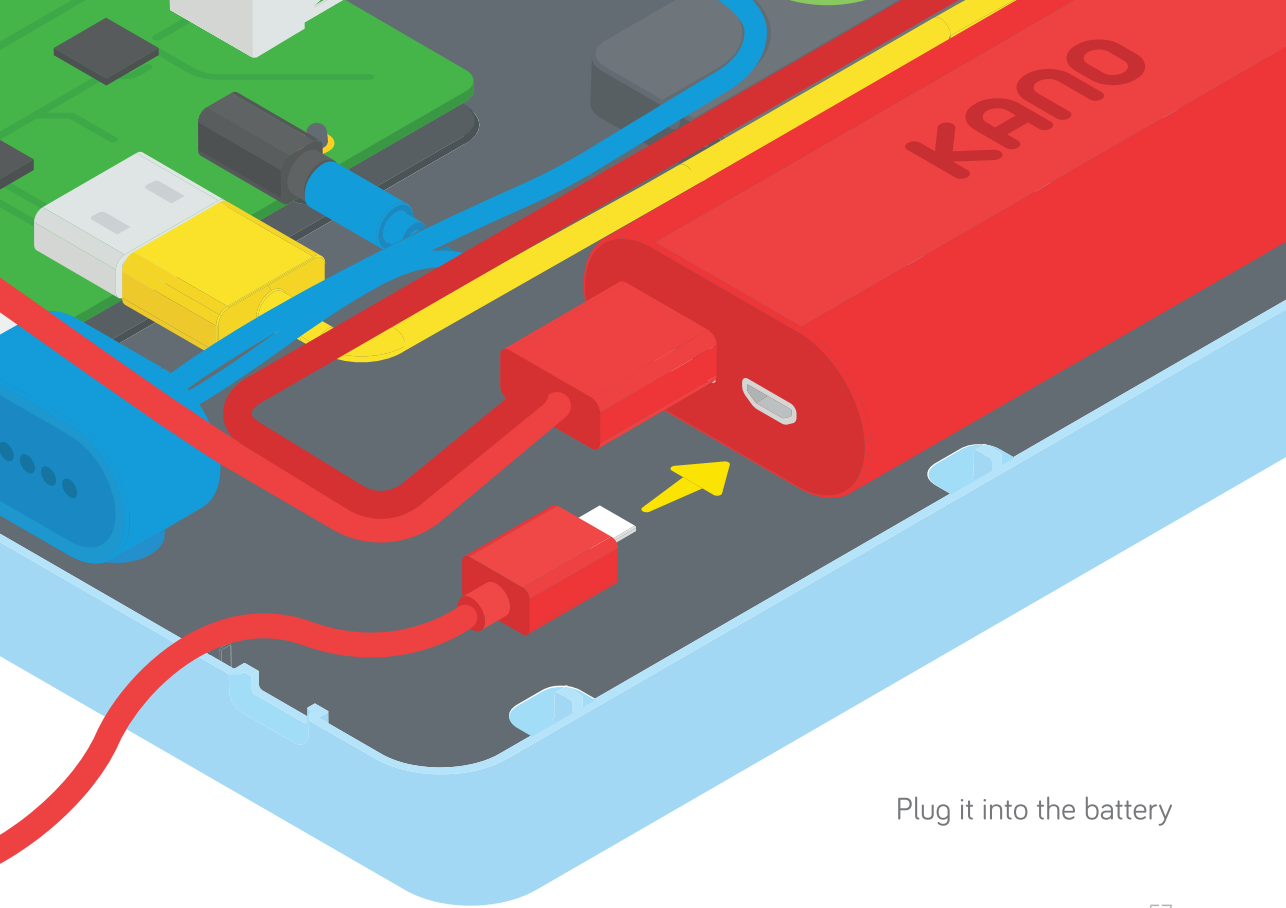


Now plug the large end
into the USB port on the battery

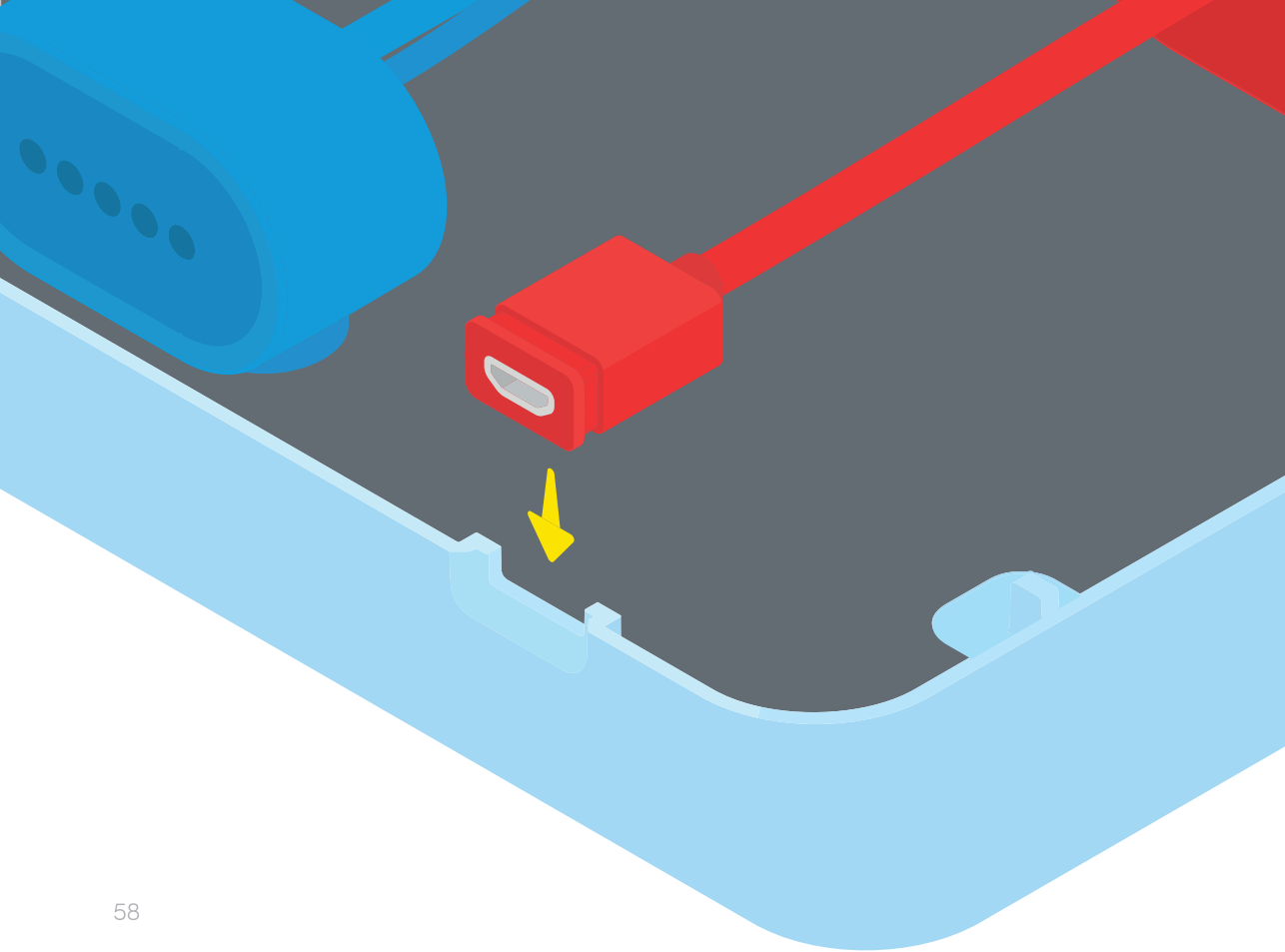


Now grab the small red power cable

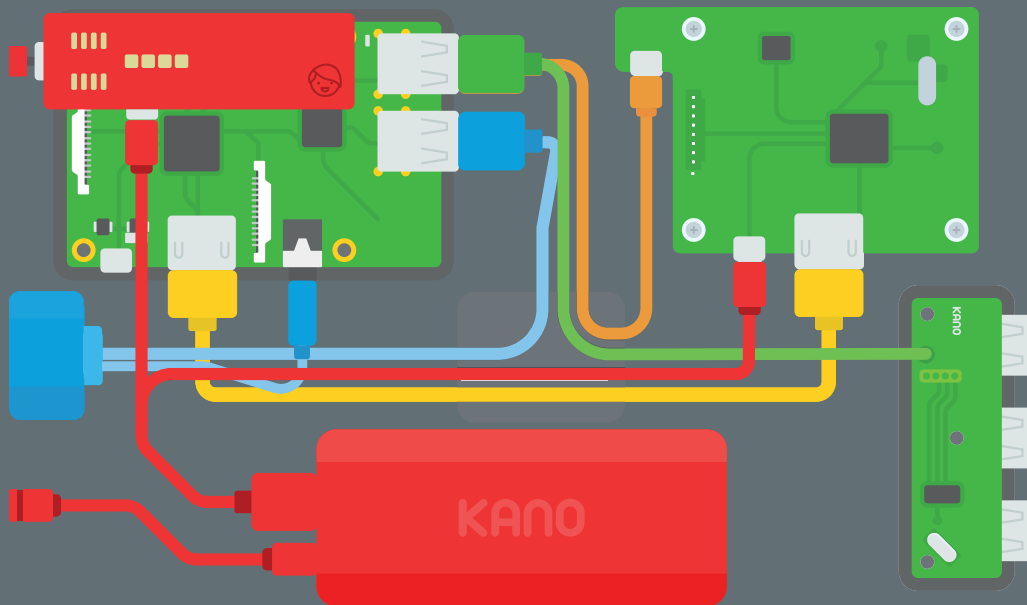




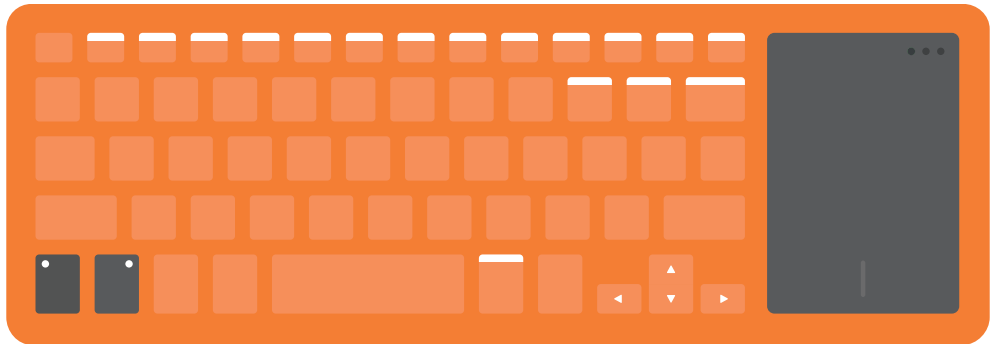
Plug it into the battery



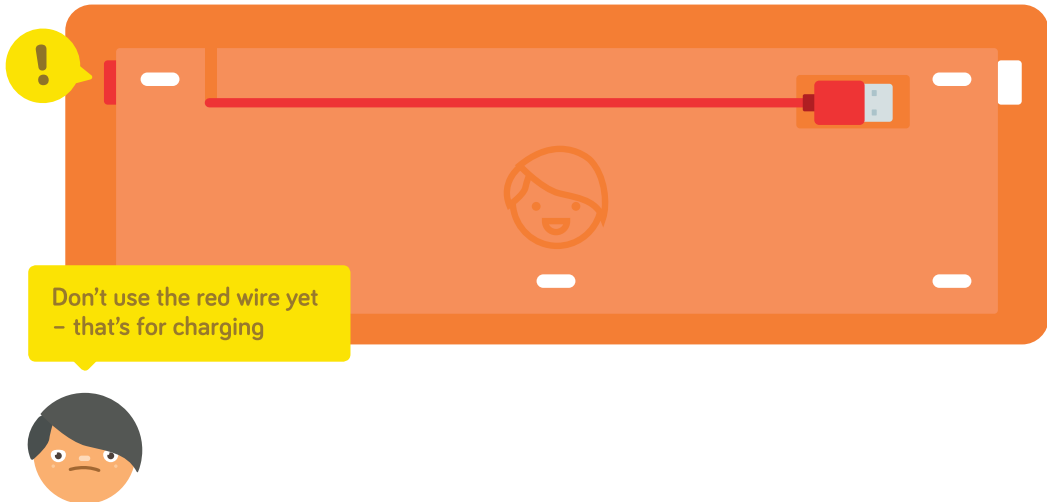
Amazing! Your computer is ready to make sound, images, and connections



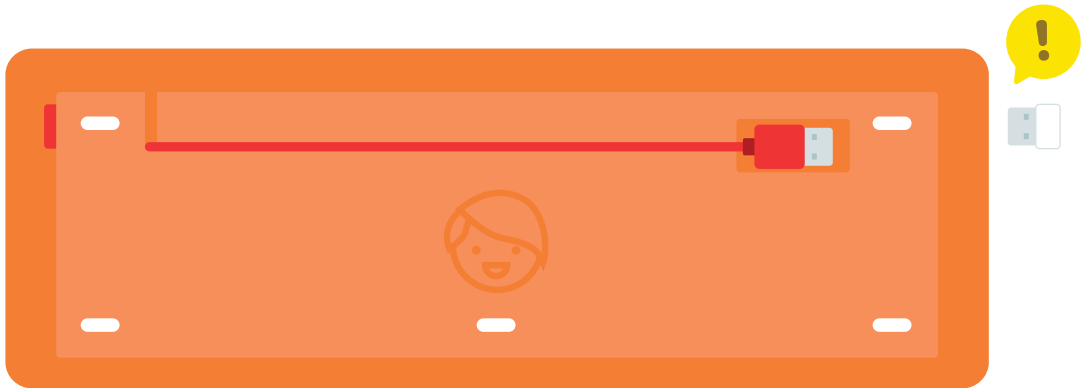
Now you need a way to talk to it. Grab your keyboard!



Pick it up, flip it over, and push the power button

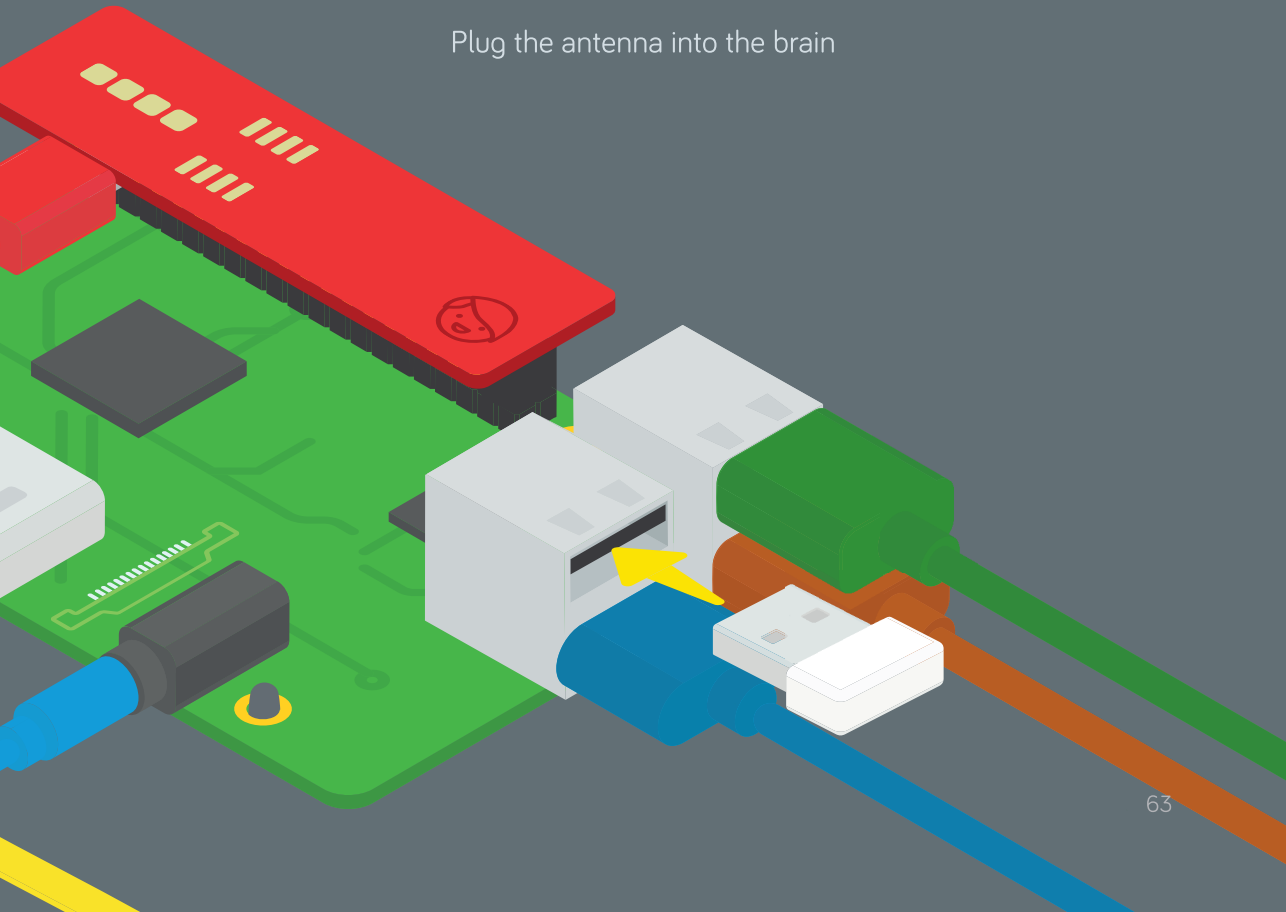


Take out the white piece

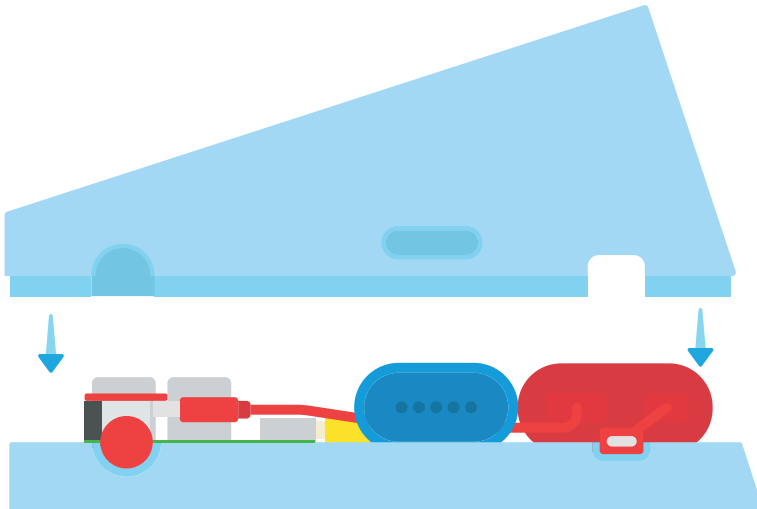


This is a radio antenna!

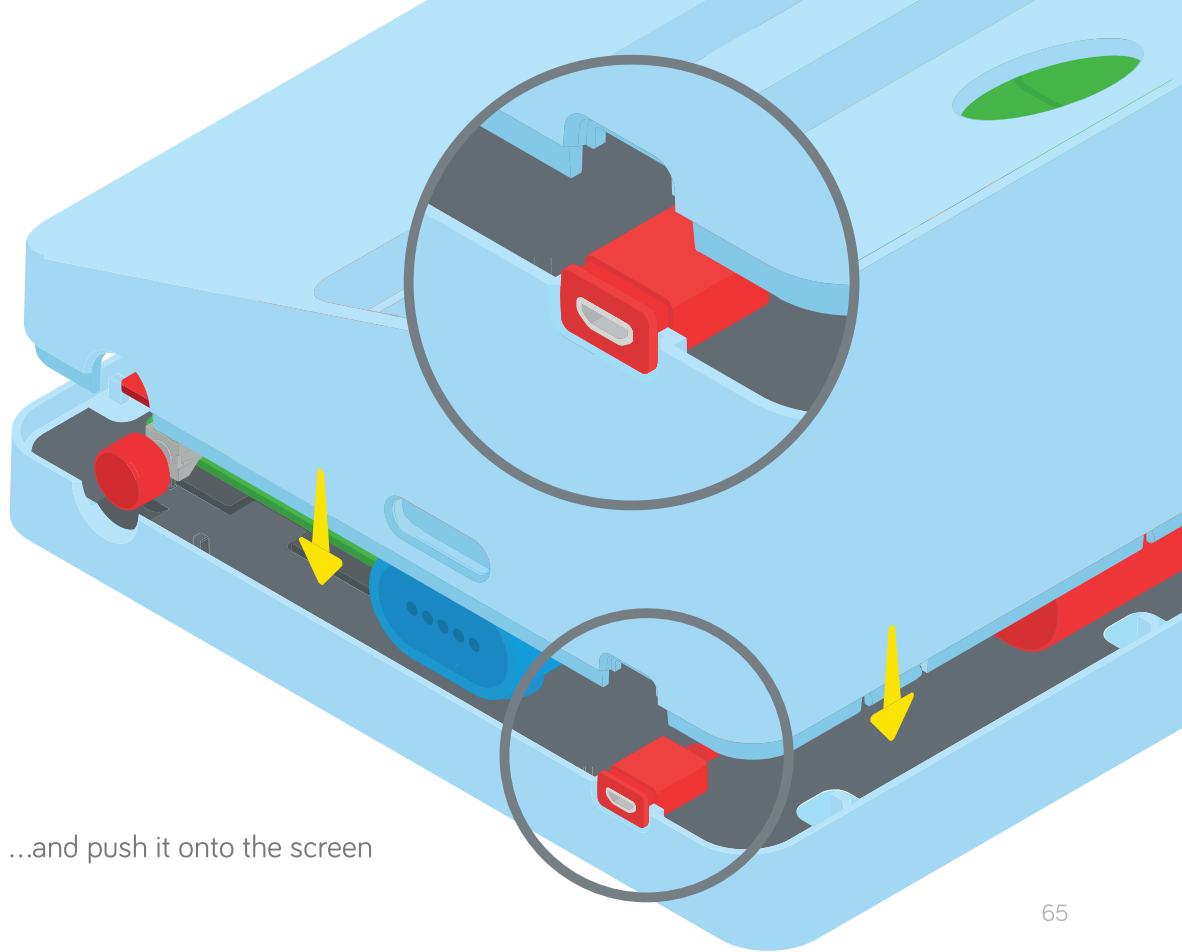
Plug the antenna into the brain



To keep your computer strong and safe, let's add the case

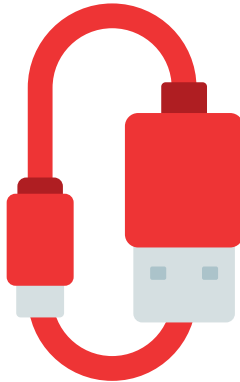


Grab the screen case...

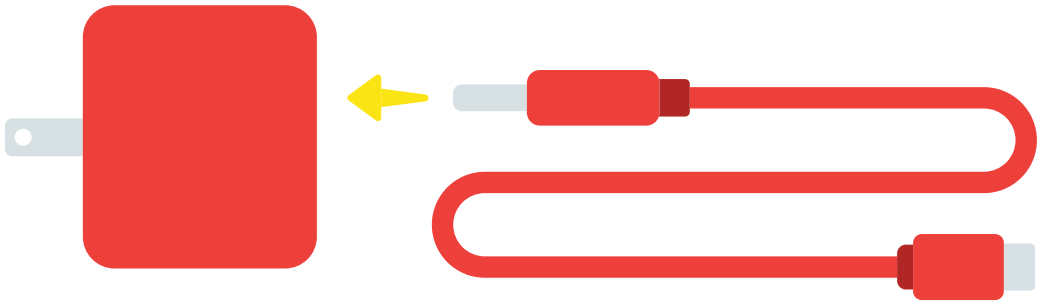


...and push it onto the screen

Now grab the long red charging cable



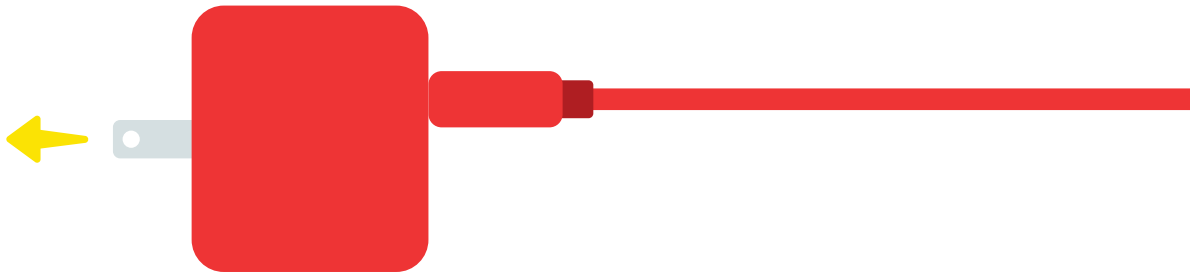
Plug the big end into the PSU



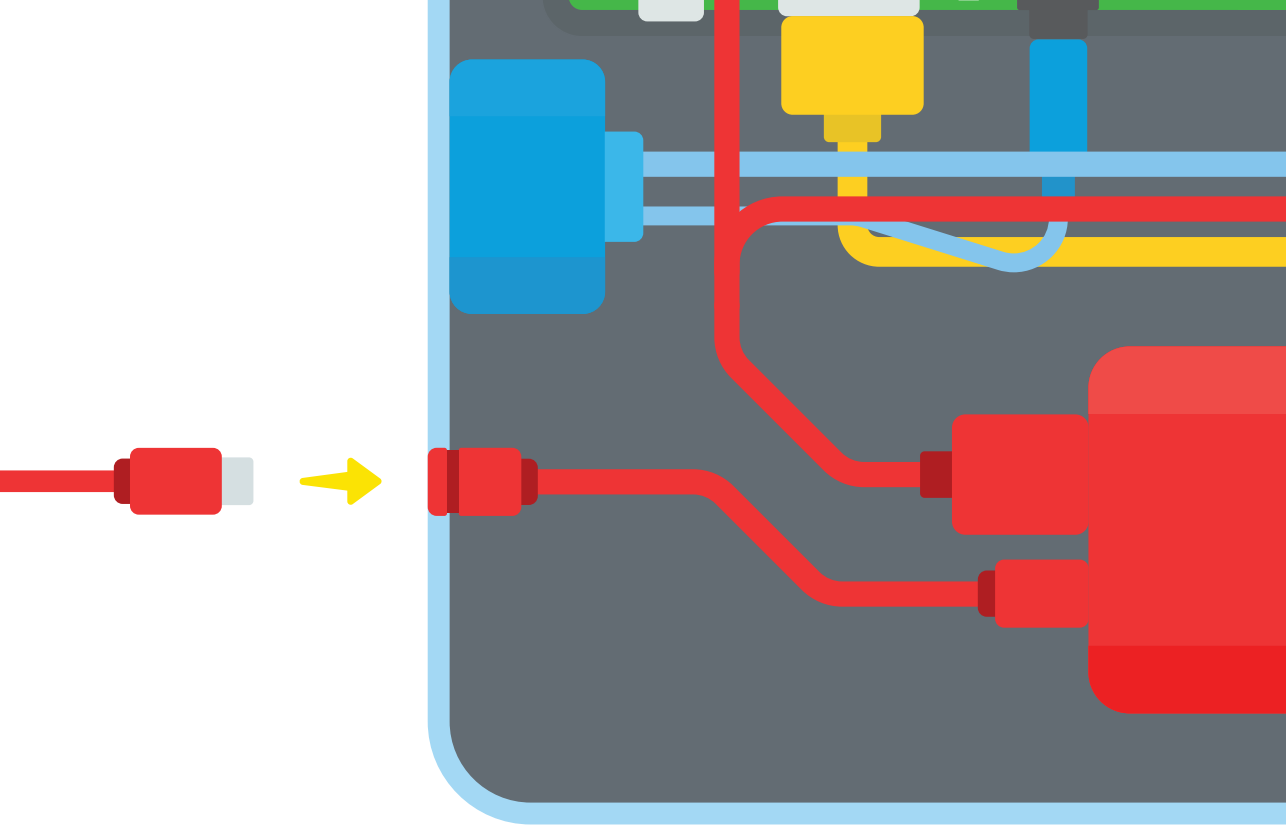
That means **Power Supply Unit**



Then plug the PSU into the wall...



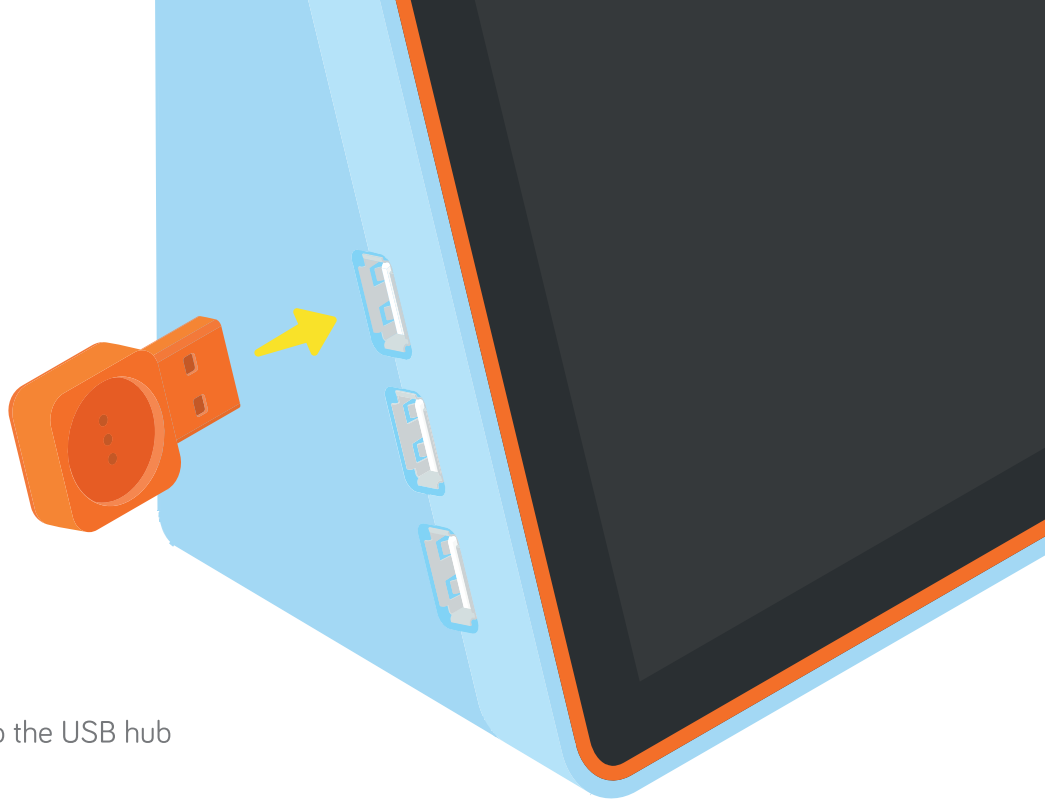
...and the other end into your computer



Now, one final touch: the Sound Sensor

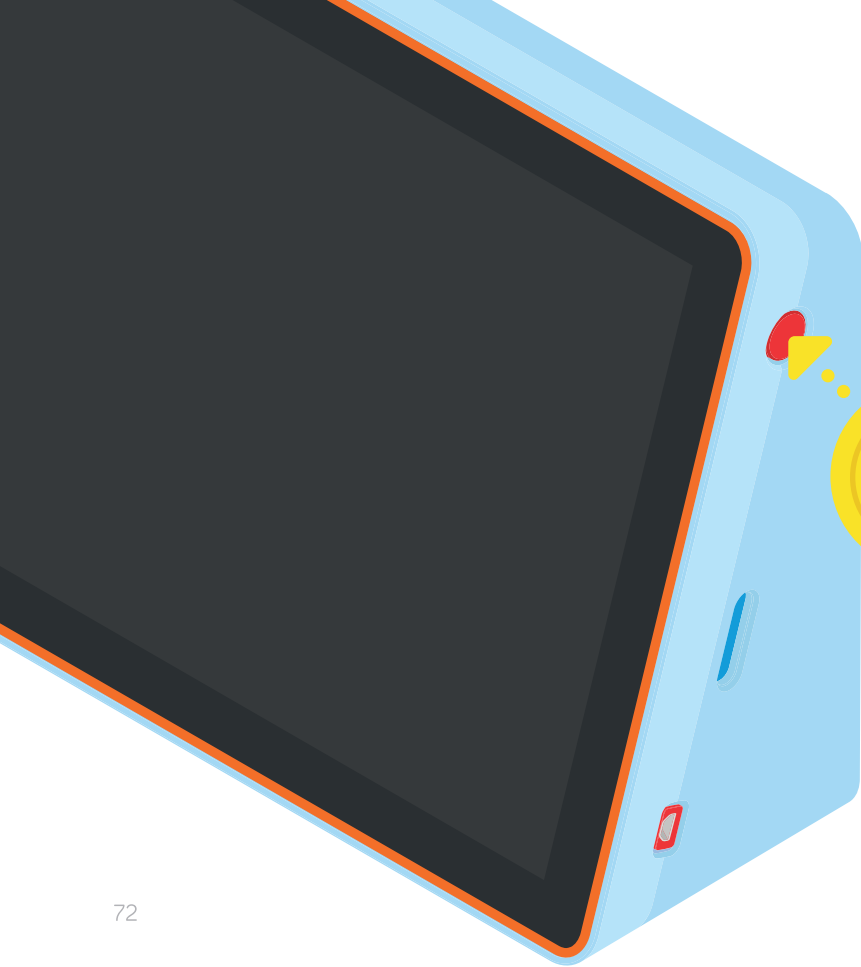


It lets your computer listen to the world around you



Plug it into the USB hub

Now you're ready to make
sound-controlled apps, art and games



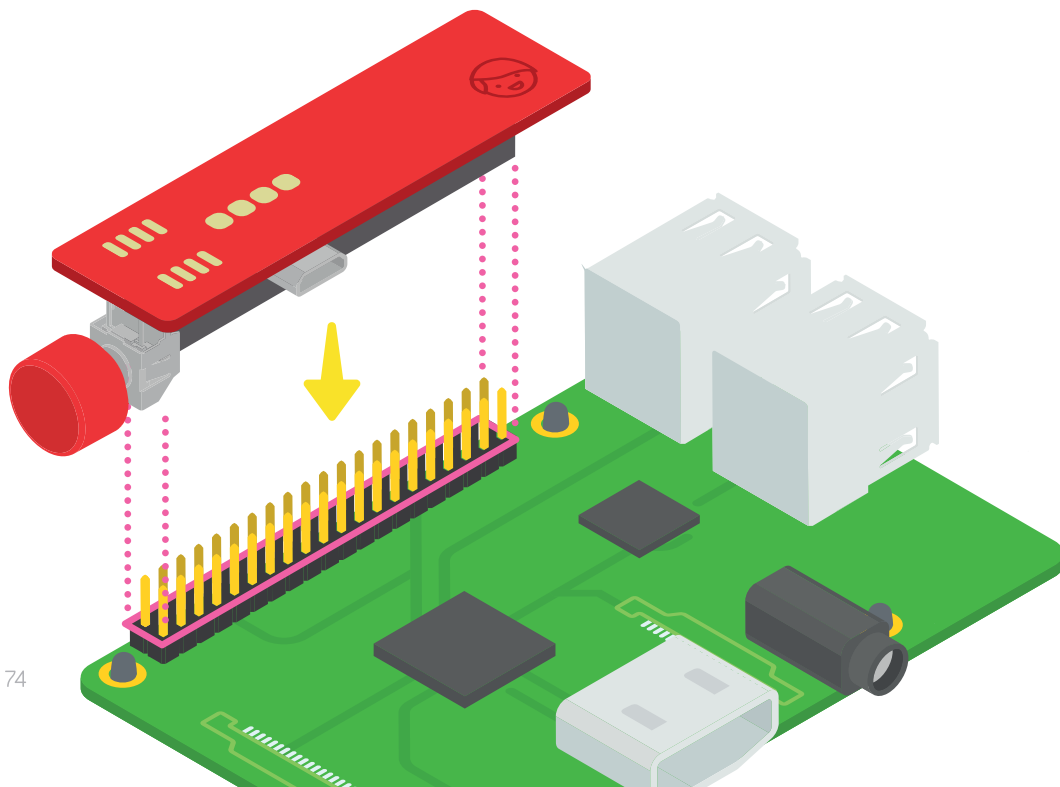
Hold the power button
for **3 seconds** to...



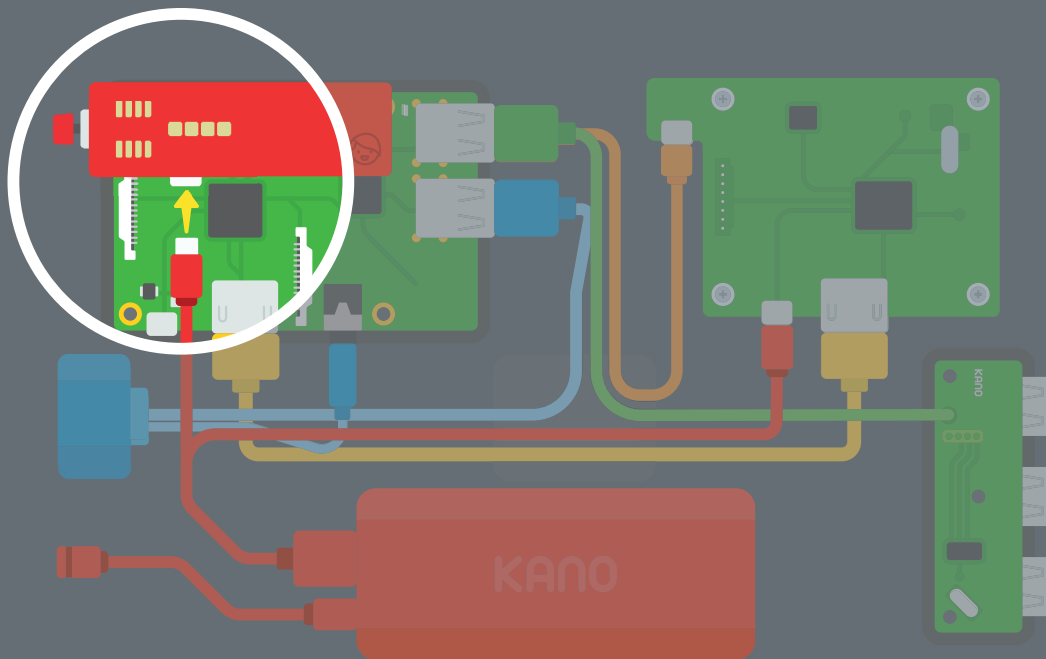
...bring it to life!

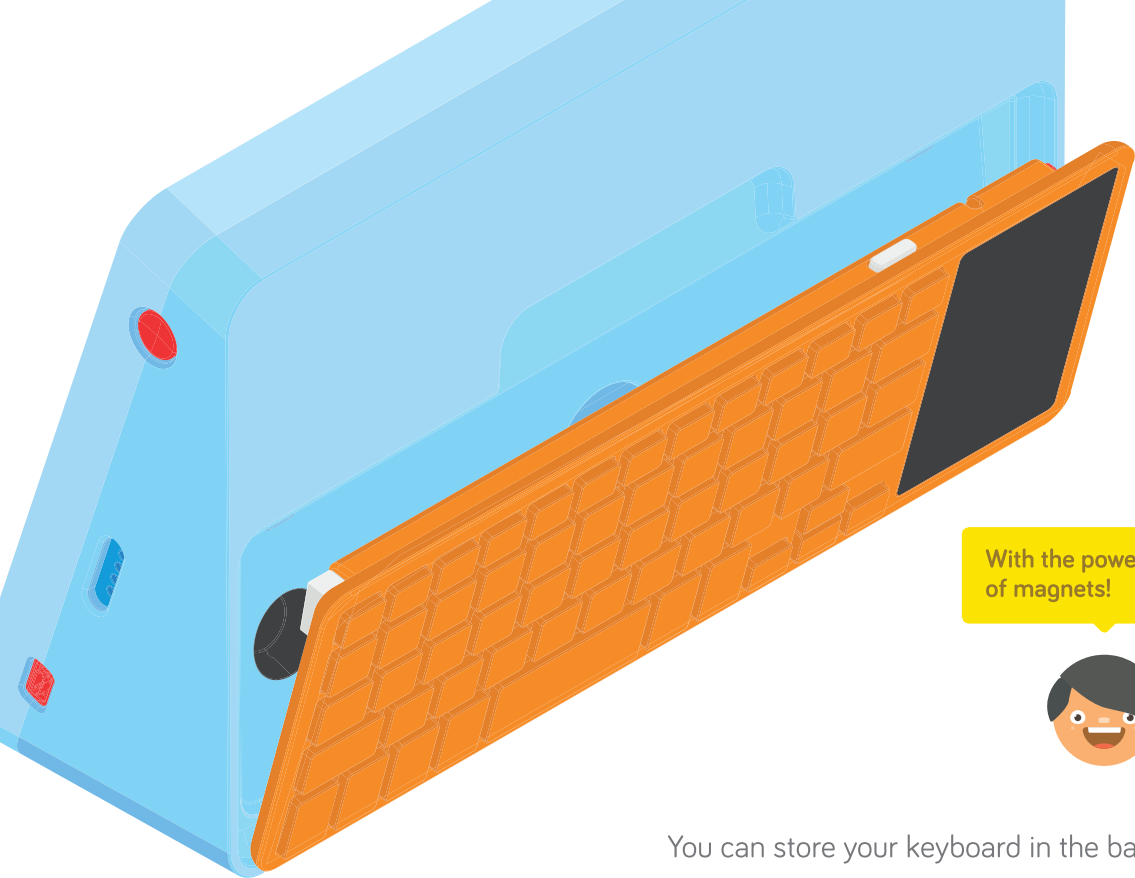


If your computer doesn't turn on, make sure your power board covers all the pins



And that your power cable is plugged into the power board and the battery



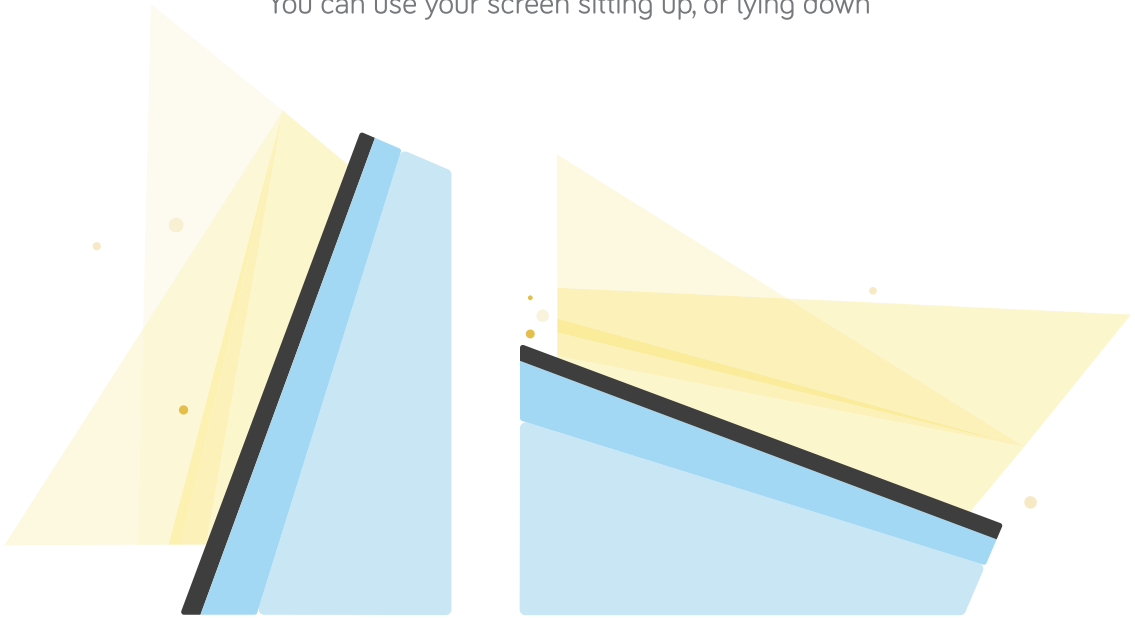


With the power
of magnets!



You can store your keyboard in the back!

You can use your screen sitting up, or lying down



Click on settings () to flip the display

The lights on the keyboard tell you how it's feeling



Green, orange, and red mean different things



Green

Successful radio connection



Slow flashes

Turned on, but not connected



Fast flashes

Low on power, time to charge!



Orange

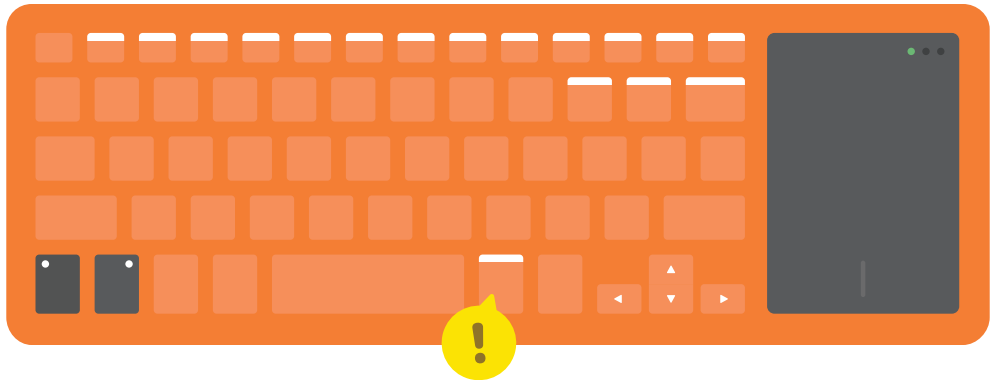
Caps lock status



Red

Charging

Your keyboard has hidden powers



Activate the white functions by holding [FN]

Try these combinations



Run code
Make it happen!



Mouse speed
Medium or fast

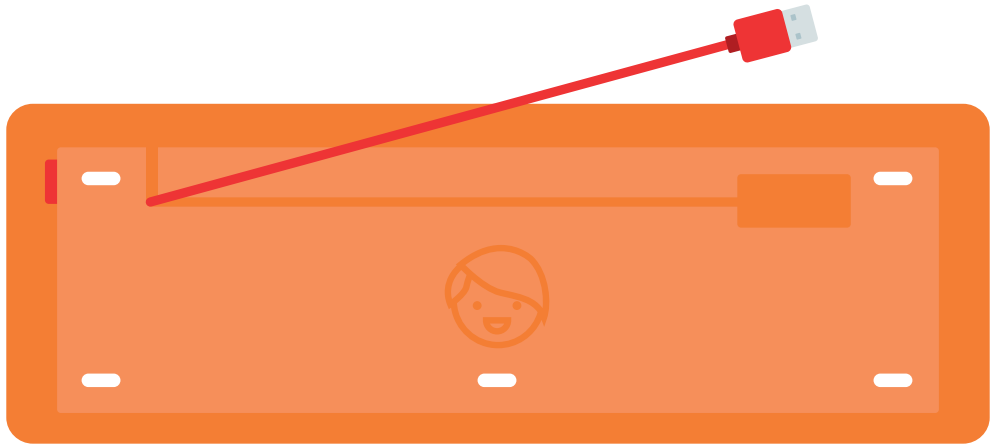


Share creations
Show off to friends



Useful for coding
All of these keys are frequently used when coding, so make sure to learn them

The keyboard needs to be charged from time to time



Plug the red cable into the power plug or your computer to charge it

The same for your computer's battery



Use your power cable and plug to charge the battery

Something not working? Get help fast - go to **help.kano.me** and search the Help Codes below:

Computer not powering up	CT2
--------------------------	-----

My screen says “No signal”	CT3
----------------------------	-----

Battery doesn't charge	CT4
------------------------	-----

Keyboard doesn't work	CT5
-----------------------	-----

Want more?



help.kano.me

Help with anything
from kits to coding



kano.me/world

Endless content by
a friendly community



kano.me/shop

More kits
and sensors



/teamkano

For tutorials, films
and fun stuff



/kanocomputing

Talk to us and get
the latest news



@teamkano

Send us your pics
and questions



A Computer Anyone Can Make[™]
Anyone Can Make[™]

COPYRIGHT © KANO COMPUTING LTD 2017.
ALL RIGHTS RESERVED 18G8039B